

PORT OF HOOD RIVER COMMISSION
Tuesday, January 20, 2015
Marina Center Boardroom
5:00 p.m.

Regular Session Agenda

1. Call to Order
 - a. Modifications, Additions to Agenda
2. Public Comment (5 minutes per person per subject; 30 minute limit)
3. Consent Agenda
 - Approve Minutes of January 6, 2015 Regular Session
 - Approve Audit for Fiscal Year Ending June 30, 2014
 - Approve Contract with Extreme Access for Pedestrian Footbridge Inspection Not to Exceed \$4,600
 - Approve Leonidas Montenegro Account Write-off in the Amount of \$5,503.45
 - Approve Accounts Payable to Jaques Sharp Attorneys at Law in the Amount of \$5,868
4. Reports, Presentations and Discussion Items
 - Bridge Liftspan Inspection Update - David McCurry, HDR Engineering
 - Nichols Basin West Edge, Hook Launch, and Pedestrian Bridge Trail Project Updates
5. Director's Report
6. Commissioner, Committee Reports
 - Urban Renewal Agency – Commissioners Streich and Davies
7. Action Items
 - a. Approve Property & Liability Insurance Policy with SDIS in the amount of \$69,263
 - b. Approve Estimated Payment to LGIP Account for Pedestrian Bridge Trail Project Not to Exceed \$102,113
8. Commission Call

9. Executive Session under ORS 192.660(2)(e) Real Estate Negotiations

RE-OPEN REGULAR SESSION

- Possible Actions
- Joint Meeting with Port of Cascade Lock Port Commission, 7:00 p.m.
Commission President Jess Groves, Commissioners Joeinne Caldwell, Gyda Haight, Brenda Cramblett, Donna Mohr; Interim General Manager, Paul Koch; Secretary, Sally Moore

11. Adjourn

If you have a disability that requires any special materials, services, or assistance, please contact us at 541-386-1645 so we may arrange for appropriate accommodations.

*The chair reserves the opportunity to change the order of the items if unforeseen circumstances arise. The Commission welcomes public comment on issues not on the agenda during the public comment period. With the exception of factual questions, the Commission does not immediately discuss issues raised during public comment. The Commission will either refer concerns raised during public comment to the Executive Director for a response or will request that the issue be placed on a future meeting agenda. People distributing copies of materials as part of their testimony should bring **10 copies**. Written comment on issues of concern may be submitted to the Port Office at any time.*

Port of Hood River Commission
Regular Session Meeting Minutes of January 6, 2015
Marina Center Boardroom

THESE MINUTES ARE NOT OFFICIAL until approved by the Port Commission at the next regular meeting.

Present: Commissioners Jon Davies, Fred Duckwall, and Rich McBride; Port Counsel Jerry Jaques; from staff, Michael McElwee, Fred Kowell, Anne Medenbach, and Laurie Borton

Absent: Commissioners Brian Shortt and Hoby Streich

Media: None

1. Call to Order: President McBride called the meeting to order at 5:00 p.m.

a. Modifications, Additions to Agenda: At staff request, the Consent Agenda item regarding pFriem Brewing Lease Addendum No. 7 was moved to Executive Session for discussion.

b. Introduction of Genevieve Scholl, Communications and Special Projects Manager: Executive Director Michael McElwee introduced Scholl, who will begin full-time employment with the Port as Communications and Special Projects Manager on January 12, 2015. Scholl has been working part-time as Special Projects Manager and was acknowledged for her work in obtaining grants for the Port. McBride congratulated Scholl and welcomed her to the team.

2. Public Comment: None.

3. Consent Agenda: *(The pFriem lease addendum was removed.)*

- Approve Lease Amendment No. 2 with Rajotte, Bottomley, and Murphy at Ken Jernstedt Airfield (hangar land lease)
- Approve Agreement for Legal Services with Jaques Sharp Attorneys at Law

Motion: Move to approve Consent Agenda as amended.

Move: Duckwall

Second: Davies

Discussion: Davies cited a potential conflict of interest due to a client relationship regarding the legal services agreement with Jaques Sharp Attorneys at Law

Vote: **Aye:** Davies, Duckwall, and McBride

Absent: Shortt, and Streich

MOTION CARRIED

4. Reports, Presentations and Discussion Items:

- 2013-14 Audit, Tara Kamp, Pauly Rogers and Co., P.C.: Kamp reviewed the Financial Report and accompanying Communication to the Governing Body for the fiscal year ending June 30, 2014. Kamp stated the audit was very clean overall and credited Finance Manager Fred Kowell and his staff for their assistance. A management letter, which would have included recommendations, did not need to be issued according to Kamp.

- Ken Jernstedt Fixed Base Operations, Scott Gifford, Classic Wings Aero Services: Gifford reviewed airport operations for the past year and noted steady (or increased) activity in flight instruction, scenic flights, private gliders, and activities associated with the Western Antique Aero and Automobile Museum. Gifford mentioned that fuel sales were also fairly steady and that Shell is now their supplier and offers unleaded AvGas. The grass runway is used quite a bit and Gifford stated minor

improvements could be made; he would also like to see the runway lights changed out. With regard to the Airport Master Plan, Gifford suggested more frequent meetings that are more focused on the airport's future rather than a review of the past. McElwee commended Gifford and the staff of Classic Wings for the good working relationship and the expertise in aircraft maintenance service that's being provided.

- **Electronic Toll Upgrade** – Finance Manager Fred Kowell reported staff had determined an HDR consultant would assist the Port in the selecting available options within current budget limits and the project would move forward this year. Kowell will bring another progress update back to the Commission.

- **South Basin Dock Seasonal Lottery:** Laurie Borton, Marina Manager, reported seven slips on the South Basin Dock would be made available again in 2015 for seasonal moorage for watercraft 23 feet or less in length. New this year will be two lottery draws—one for the months of May, June and July; and a second lottery for the 3-month period of August through September. The monthly moorage for the seasonal lottery will be \$150 with a \$50 refundable key deposit. Advertisement for the lottery will begin later this month on the Port website, through a Press Release, and public notices in the Hood River News. The lottery drawing will be held in early March.

5. Director's Report/Informational Items: McElwee informed the Commission the Port of Cascade Locks Commission would like to hold a joint meeting on January 20 to discuss issues in common—bridge operations, tolling, and the OneGorge coalition. McElwee provided a mid-year progress update for his 2014-15 Work Plan and requested comment from the Commission. The Waterfront Refinement Plan was adopted by City Council on December 22; there is a 21-day appeal period and McElwee reported that none are expected. Bids are due January 13 on the Nichols Basin West Edge Trail project and results will be reported at the January 20 meeting.

6. Commissioner, Committee Reports: None.

7. Action Items:

a. Approve Minutes of December 16, 2014 Regular Session: Borton noted the minutes, which are generally a Consent Agenda item, was an Action Item on the Agenda because they had not been included in the materials mailed to the Commission.

Motion: Move to approve minutes of December 16, 2014 regular session

Move: Duckwall

Second: Davies

Vote: **Aye:** Davies, Duckwall, and McBride

Absent: Shortt, and Streich

MOTION CARRIED

b. Approve Appointment to the Urban Renewal Agency Board for a Two Year Term Expiring December 31, 2016: Commissioner Shortt, through a text message read by McBride and confirmed by Commissioner Duckwall, expressed interest in stepping down from the Urban Renewal Agency ("URA") Board in order to sit on the Marina Ad-hoc Committee. Davies agreed to this change. A letter will be submitted to City Council requesting the appointment of Davies to the URA Board for the two-year term.

Motion: Move to Approve Resignation of Jon Davies from Marina Ad-hoc Committee
Move: Davies
Second: Duckwall
Vote: **Aye:** Davies, Duckwall, and McBride
Absent: Shortt, and Streich

MOTION CARRIED

Motion: Move to Approve Appointment of Jon Davies to the Urban Renewal Agency Board for a Two-Year Term Expiring December 31, 2016
Move: Duckwall
Second: Davies
Vote: **Aye:** Davies, Duckwall, and McBride
Absent: Shortt, and Streich

MOTION CARRIED

Motion: Move to Approve Appointment of Brian Shortt to the Marina Ad-hoc Committee, Designating Shortt as Committee Chair
Move: Davies
Second: Duckwall
Discussion: Davies stated he would be willing to participate in meetings, if available, to provide continuity during the transition
Vote: **Aye:** Davies, Duckwall, and McBride
Absent: Shortt, and Streich

MOTION CARRIED

c. **Approve Property and Liability Insurance Policy with SDIS in the Amount of \$69,263:** Davies cited a direct business conflict. Since a quorum of votes was not available, this item was tabled to the January 20 meeting.

d. **Approve Agreement with Classic Wings Aero Services as FBO for Ken Jernstedt Airfield:** A renewal of the concession would extend the Agreement for another five-year period, with a new rate of \$1,740 per month and an annual CPI adjustment; the maintenance hangar operated by Nostaligaire, Inc. and land lease for the residential trailer owned by Classic Wings will be written as separate agreements.

Motion: Approve Agreement with Classic Wings Aero Services as FBO for Ken Jernstedt Airfield, Subject to Legal Counsel Review
Move: Duckwall
Second: Davies
Vote: **Aye:** Davies, Duckwall, and McBride
Absent: Shortt, and Streich

MOTION CARRIED

e. **Approve Land Lease with Classic Wings Aero Services for Residential Trailer Area:**

Motion: Approve Land Lease with Classic Wings Aero Services for Residential Trailer Area at Ken Jernstedt Airfield, Subject to Legal Counsel Review

Move: Davies

Second: Duckwall

Vote: **Aye:** Davies, Duckwall, and McBride

Absent: Shortt, and Streich

MOTION CARRIED

f. **Approve Hangar Lease with Nostalgaire, Inc.:** Anne Medenbach, Development/Property Manager, commented the stepped rate for the five-year hangar lease, which Scott Gifford operates as an aviation maintenance business has been separated from the FBO agreement due to difference business entities.

Motion: Approve Hangar Lease with Nostalgaire, Inc. at Ken Jernstedt Airfield, Subject to Legal Counsel Review

Move: Davies

Second: Duckwall

Vote: **Aye:** Davies, Duckwall, and McBride

Absent: Shortt, and Streich

MOTION CARRIED

g. **Authorize IGA with City of Hood River Regarding Professional Services Associated with the Waterfront Refinement Plan:** In May 2014 the Port agreed to participate in preparation of a plan to modify zoning for a large portion of the waterfront. McElwee stated this Intergovernmental Agreement memorializes the financial commitment for 50% of the consultant costs to prepare the Plan.

Motion: Move to Authorize Commission President to Execute an IGA with the City of Hood River for Planning Services Associated with the Waterfront Refinement Plan Not to Exceed \$25,000

Move: Duckwall

Second: Davies

Vote: **Aye:** Davies, Duckwall, and McBride

Absent: Shortt, and Streich

MOTION CARRIED

8. Commission Call:

9. Executive Session: Regular Session was recessed at 6:17 p.m. and the Commission was called into Executive Session under ORS 192.660(2)(e) Real Estate Negotiations.

10. Possible Action: The Commission was called back into Regular Session at 7:15 p.m. The following action was taken as a result of Executive Session.

Motion: **Move to Approve Agreement Approve Lease Amendment No. 7 with pFriem Brewing at Halyard Building Including Personal Guarantors**
Move: Davies
Second: Duckwall
Vote: **Aye:** Davies, Duckwall, and McBride
Absent: Shortt, and Streich

MOTION CARRIED

Motion: **Move to Authorize Executive Director to Execute Payment Plan with Electronics Assemblers**
Move: Davies
Second: Duckwall
Vote: **Aye:** Davies, Duckwall, and McBride
Absent: Shortt, and Streich

MOTION CARRIED

11. Adjourn: President McBride adjourned the meeting at 7:17 p.m.

Respectfully submitted,

Laurie Borton

ATTEST:

Rich McBride, President, Port Commission

Hoby Streich, Secretary, Port Commission

Commission Memo

To: Commissioners
From: Fred Kowell
Date: January 20, 2015
Re: Audit Approval

At the January 6 meeting, the audit for the fiscal year ending June 30, 2014 was presented. Tara Kamp of Pauly Rogers and Company, LLC, reviewed the financial report and the required Communications to the Board. She also addressed questions from the Commission.

RECOMMENDATION: Approve Audit for Fiscal Year Ending June 30, 2014.

Commission Memo

To: Commissioners
From: Anne Medenbach
Date: January 20, 2015
Re: Pedestrian Bridge Inspection Contract with Extreme Access Inc.

The Port of Hood River's Pedestrian Bridge was inspected in 2009 by Extreme Access Inc. The bridge is on a 5 year inspection cycle. We have budgeted \$4,500 to do the inspection this fiscal year.

Extreme Access Inc. is quoting \$4,600 for the inspection (see attached scope of work).

RECOMMENDATION: Approve Personal Services Contract with Extreme Access Inc. Not to Exceed \$4,600.



Anne Medenbach
Port of Hood River
Development/Property Manager
1000 E. Port Marina Drive
Hood River, OR 97031
(541) 386-1645 amedenbach@portofhoodriver.com

RFQ: Hood River Pedestrian Bridge Inspection

Wednesday, January 07, 2015

Dear Ms. Medenbach:

We have very much enjoyed working with the Port of Hood River over the last several years and appreciate the opportunity to submit a proposal for this current project.

This letter is our proposed scope of work at the Port of Hood River, includes a brief summary of the work we will perform. We have attached a breakdown of our costs on a separate spreadsheet.

Proposed Scope of Work

The intent of our proposed services is as follows:

- We will provide a certified rope access team to accomplish the items listed below.
- Supply proof of NBIS certification (attached).
- Review previous bridge inspection reports
- Perform a routine bridge inspection conforming to NBI level reporting
 - In addition to the NBI routine inspection, conduct an arm's length inspection of the saddles, the swollen areas at the top of the main cables and the upper tower butt welds.
- Provide a digital report of bridge inspection findings including:
 - Photographs of relevant defects
 - Maintenance and repair recommendations
 - Recommendations for further investigation if warranted.



Safety Clause:

Extreme Access personnel shall have the right to suspend performance of the contract at any time if, in their absolute discretion, they determine that the working conditions or tasks directed by the client or any other persons presents an unreasonable risk of physical injury to any of their staff. Extreme Access shall immediately notify the client of this suspension of work for safety reasons. The client shall thereafter have a reasonable amount of time, not to exceed five (5) days, within which to correct the condition giving rise to the Extreme Access's safety concerns, or to reach agreement with Extreme Access regarding modification of the task or tasks to be performed by Extreme Access. If after the expiration of a reasonable time or five (5) days which ever expires first, Extreme Access is not satisfied that the safety concerns have been alleviated, Extreme Access may, at their option, immediately terminate the contract. Extreme Access shall have no liability for suspension, delay, or termination pursuant to this paragraph and shall be entitled to the agreed upon compensation up to the effective date of termination.

Cost and Schedule

Extreme Access's costs for the above outlined services are \$4,600. I believe the inspection is overdue so we have tentatively reserved time in our schedule to start this work the week of February 24th, 2015.

We appreciate the opportunity to be of service on this project. If there are any questions please call Scott Hibbs at 360-901-9694.

Sincerely

EXTREME ACCESS INC

By Scott Hibbs

Scott Hibbs, PE

Client: Port of Hood River - Anne Medenbach
Job Name: Inspection of Port of Hood River Pedestrian Bridge
Project Summary of Hours

Item	Description Task	Principal Lead Insp	PM Engineer	Lead Inspector	Lead Inspector	Senior Tech	Hours/Task	Direct Labor per Task	% of total hours
	Assumptions	Heather	Hibbs	Coleman	Fralck	Gonzales			
1	Management	1	2				3	\$0.00	0%
2	Field Preparation							\$421.50	9%
3	Safety meeting and site access		1		1		2	\$244.99	5%
4	Travel		3		6		9	\$1,051.44	26%
5	Inspection		5		6		12	\$1,469.94	35%
6	Report		8				8	\$0.00	0%
13								\$0.00	0%
14								\$0.00	0%
	Consultant Hours	1	20	0	13	0	34	\$4,303.87	100%
	Hourly Rate	\$142.50	\$139.50	\$110.00	\$105.49	\$78.23			
	Overtime Hours	0.00	0.00	0.00	0.00	0.00			
	Overtime Pay	\$25.48	\$23.10	\$20.23	\$19.68	\$14.75			
	Overtime Burden	\$0.00	\$0.00	\$0.00	\$0.00	\$0.00			
	Burdened Labor Subtotal	\$142.50	\$2,790.00	\$0.00	\$1,371.37	\$0.00		\$4,303.87	
	Direct Expenses							\$284.76	
	ESTIMATE TOTAL							\$4,588.63	
							Budget	\$4,588.63	
							Say	\$4,600	

DIRECT EXPENSES				
Item Description	Quant.	Unit	Unit Price	Total
Mileage	504	ea	\$0.565	\$284.76
Shipping Equipment		ea	\$0.00	\$0.00
Rental Vehicle		ea	\$0.00	\$0.00
Room		ea	\$0.00	\$0.00
Board		ea	\$0.00	\$0.00
Misc Job Expendables		lump-sum	\$0.00	\$0.00
Photography and Copying		lump-sum	\$0.00	\$0.00
Report production		ea	\$0.00	\$0.00
Communication		fax/elec	\$0.00	\$0.00
Coordination		fed-ex	\$0.00	\$0.00
Misc report costs	1	lump sum	\$50.00	\$50.00
Subtotal				\$284.76
Subconsultant Description				
	1	lump-sum		\$0.00
	1	lump-sum		\$0.00
Total Subconsultant Services				\$0.00
Subtotal Direct Expenses				\$284.76
Fee on Direct Expenses				
Total Direct Expenses				\$284.76
Overhead Rate	190.70%			
Fixed Fee Rate (Profit)	12.00%			
Direct Expense Fee Rate	0%			

Commission Memo

To: Commissioners
From: Fred Kowell
Date: January 20, 2015
Re: Accounts Receivable Write-off

The Port from time to time experiences accounts receivables that are no longer collectible. The tenant in this case is Leonidas Montenegro. We leased him space at the Jensen Building as well as a storage unit within the Breezeway. The Port has been working with Mr. Montenegro to pay down on his past due balance but his business did not have the growth that was originally anticipated. Even with his consistent partial payments, he has not been able to bring down his outstanding balance. Staff has terminated his lease as of the end of December 2014. He has agreed to and has paid \$1,500 towards the outstanding balance.

Staff requests that the outstanding balance of \$5,503.45 be written off.

RECOMMENDATION: Write-off uncollectible account of \$5,503.45 from the account of Leonidas Montenegro.

Commission Memo

To: Commissioners
From: Fred Kowell
Date: January 20, 2015
Re: Accounts Payable Requiring Commission Approval

Jaques Sharp Attorneys at Law	\$5,868.00
Attorney services per attached summary	
TOTAL ACCOUNTS PAYABLE TO APPROVE	<u>\$5,868.00</u>

JAQUES SHARP

— ATTORNEYS AT LAW —
205 3RD STREET / PO BOX 457
HOOD RIVER, OR 97031
(Phone) 541-386-1311 (Fax) 541-386-8771

RECEIVED
JAN - 6 2015

CREDIT CARDS ACCEPTED

Page: 1
January 02, 2015

HOOD RIVER, PORT OF
1000 E. PORT MARINA DRIVE
HOOD RIVER OR 97031

Account No: PORTOHaM

Previous Balance	Fees	Expenses	Advances	Payments	Balance
ENVIRONMENTAL INSURANCE 19.00	437.00	0.00	0.00	-19.00	\$437.00
HANGAR LEASE (Insitu, Inc.) 38.00	0.00	0.00	0.00	-38.00	\$0.00
MISCELLANEOUS MATTERS JJ 1,064.00	228.00	0.00	0.00	-1,064.00	\$228.00
FBO AIRPORT AGREEMENT (Gifford/Classic Wings) 607.00	323.00	0.00	0.00	-607.00	\$323.00
OREGON BUSINESS DEV IGA (State of Oregon) 152.00	0.00	0.00	0.00	-152.00	\$0.00
TRANSPORTATION ISSUES 2,929.00	988.00	0.00	0.00	-2,929.00	\$988.00
LEASE (Pfriem Brewing) 0.00	912.00	0.00	0.00	0.00	\$912.00
REGULAR MEETING FEE JJ -350.00	350.00	0.00	0.00	0.00	\$0.00
LEASE (Hood River Distillers) 0.00	76.00	0.00	0.00	0.00	\$76.00

HOOD RIVER, PORT OF

Account No:

Previous Balance	Fees	Expenses	Advances	Payments	Balance
LEASE (Leonidas Montenegro) 0.00	171.00	0.00	0.00	0.00	\$171.00
AUDIT LETTERS 36.00	0.00	0.00	0.00	-36.00	\$0.00
LEASE (PocketFuel) 72.00	54.00	0.00	0.00	-72.00	\$54.00
ODELL PROPERTY (Robert Hanel) 266.00	114.00	0.00	0.00	-266.00	\$114.00
EXPO SITE DEVELOPMENT (Key Development; Pickhardt) 722.00	855.00	0.00	0.00	-722.00	\$855.00
LEASE (Office Lease DMV Building Congressman) 0.00	76.00	0.00	0.00	0.00	\$76.00
PROPERTY PURCHASE (Craig W. Sheppard) 0.00	247.00	0.00	0.00	0.00	\$247.00
LEASE (Construction) 114.00	19.00	0.00	0.00	-114.00	\$19.00
LEASE BIG 7 (Motherlode, LLC & Allen Barteld) 38.00	0.00	0.00	0.00	-38.00	\$0.00
WATERFRONT REFINEMENT PLAN (Zoning) 0.00	76.00	0.00	0.00	0.00	\$76.00
LEASE (Hoverlabs Corp. & Brett Faike) 133.00	0.00	0.00	0.00	-133.00	\$0.00
MEETING ISSUES 0.00	950.00	0.00	0.00	0.00	\$950.00
HOOK LAUNCH CONST. PROJECT 0.00	95.00	0.00	0.00	0.00	\$95.00
LEASE AMENDMENT (Electronic Assemblers, Inc.) JJ 0.00	247.00	0.00	0.00	0.00	\$247.00
<u>5,840.00</u>	<u>6,218.00</u>	<u>0.00</u>	<u>0.00</u>	<u>-6,190.00</u>	<u>\$5,868.00</u>

**THIS STATEMENT REFLECTS SERVICES PROVIDED AND
PAYMENTS RECEIVED THROUGH THE 31ST OF DECEMBER
UNLESS OTHERWISE STATED**

Commission Memo

To: Commissioners
From: Anne Medenbach
Date: January 20, 2015
Re: HDR-Bridge Work Update

David McCurry from HDR will be updating the Commissioners on the progress of the bridge work. They are about 80% complete, with the inspections and technical reports having been done. They are currently working on the lift span action and long term preservation plans.

RECOMMENDATION: Informational.

Commission Memo

To: Commissioners
From: Liz Whitmore
Date: January 20, 2015
Re: Waterfront Projects Update

Three exciting projects along the waterfront will begin construction this spring and improve waterfront access and trail connectivity. Project costs and related grants are detailed in the attached spreadsheet. A summary of each project is as follows:

Nichols Basin West Edge Trail: The Port competitively bid the project on January 13, 2015. The project includes the construction of a concrete walkway, seat walls, seawall structural improvements, landscaping, and beach. The engineer's base bid estimate was \$602,451.00. The following are the eight base bids the Port received:

- | | |
|-------------------------------|--------------|
| 1. Crestline Construction | \$568,485.00 |
| 2. Nutter Corporation | \$666,602.22 |
| 3. Laskey-Clifton Corp | \$687,687.00 |
| 4. Big River Construction | \$697,180.00 |
| 5. Paul Brothers, Inc | \$736,345.74 |
| 6. 3 Kings Environmental, Inc | \$743,082.60 |
| 7. Colf Construction LLC | \$836,167.00 |
| 8. Brown Contracting | \$994,888.00 |

Crestline Construction is the apparent low bidder. Nine alternates were included in the project and are summarized in the attached bid tabulation spreadsheet. Staff recommends accepting Alternates 3,5,6,7, and 8. These are premium concrete finish at plaza area, two stone seat walls in lieu of concrete, and a 1-year landscaping maintenance contract. Locations of alternates are indicated on attached plans and will be reviewed by staff during the Commission Meeting. Project will commence by April 1, 2015 with an estimated completion of June 30, 2015.

Staff is seeking input from Commissioners to determine the final approved alternates before issuing the Intent to Award to Crestline Construction. Crestline would remain the low bidder no matter which combination of alternates is chosen.

Hook Launch: The contract with Crestline has been executed and a Notice to Proceed has been issued. Staff is currently working with Andy Jansky of Flowing Solutions to determine potential draw-down dates of the pool with the Army Corps of Engineers. Initial discussions have indicated this cannot occur until mid-March. Alternate design solutions are currently being considered to shorten the length of the ramp and toe depth to reduce the impact of in-water work, as well as applying for a permit extension.

Pedestrian Bridge Trail: Recall that in 2006, \$900,000 in federal funding was obtained to determine the feasibility of a new Frontage Road connecting Exits #63 and #64. The project was determined not to be feasible and the remaining funds of \$390,000 were set aside to be applied toward a bicycle and pedestrian path. The project begins at the Pedestrian Bridge and includes kiosks, stone seat walls, path improvements adjacent to the Museum, bicycle sharrows along Marina Way, and sidewalk and crosswalk improvements at the Boat Launch parking lot leading up to the Button Bridge intersection.

The construction documents are complete and the project has been advertised through ODOT, with a bid date of January 29, 2015. The engineer's estimate for the project is \$242,599. Engineering fees for design development, construction documents and construction engineering are \$266,384. Due to the Federal and State requirements to complete the project, engineering fees for a small project are proportionately very high. As per their rules, ODOT has requested a funding transfer into the Local Government Investment Pool (LGIP) to cover the Port's required local match and additional project costs assuming a low bid that does not exceed the engineer's estimate by 10%. Excess funds would be returned to the Port if project costs came in lower. This is an action item later in the meeting.

Construction is estimated to commence in March of 2015 and complete in June 2015.

RECOMMENDATION: For discussion.

PORT OF HOOD RIVER
Schedule of Project Cost and Related Grants
For the FY 2014-15

PER FINANCIAL FORECAST AND BUDGET

	Cost	CGWA	HRV Parks	Federal	Other	Total Grants	Port Cost
Hook Launch	\$ 143,000	\$ 50,000	\$ 20,000		\$ 50,000	\$ 120,000	\$ 23,000
Nichols Basin West Edge Trail	800,000				575,000	575,000	225,000
Pedestrian Bridge Trail	434,392			390,000		390,000	44,392
							<u>292,392</u>

LATEST ESTIMATED COST AND GRANT FUNDS

Project	Cost	CGWA	HRV Parks	Federal	Other	Total Grants	Port Cost
Hook Launch	\$ 142,790	\$ 50,000	\$ 20,000		\$ -	\$ 70,000	\$ 72,790
Nichols Basin West Edge Trail	822,230				602,263	602,263	219,967
Pedestrian Bridge Trail	508,983			390,000		390,000	118,983

DIFFERENCE

Project	Cost	CGWA	HRV Parks	Federal	Other	Total Grants	Port Cost
Hook Launch	\$ 210	\$ -	\$ -	\$ -	\$ 50,000	\$ 50,000	\$ (49,790)
Nichols Basin West Edge Trail	(22,230)	-	-	-	(27,263)	(27,263)	5,033
Pedestrian Bridge Trail	(74,591)	-	-	-	-	-	(74,591)
							<u>(119,348)</u>

Available Budget Transfer from Facilities Projects Decreased in Scope
(lensen restrooms, Yacht Club restrooms, Yacht Club HVAC replacement)

115,000

NICHOLS BASIN WEST EDGE TRAIL - BID TABULATION

BID OPENING - Tuesday, January 13, 2015 at 2:00 pm PST; Port of Hood River Boardroom

#	BIDDER	BID PROPOSAL	ALT #1 Synthetic Turf	ALT #2 Vehicular Concrete	ALT #3 Premium Concrete	ALT #4 Pre-manuf Guardrail	ALT #5 CIP Seat Wall #2	ALT #6 Stone Seat Wall #1	ALT #7 Stone Seat Wall #2	ALT #8 1 Yr Maint Landscape	ALT #9 Delete Solar Bollards	TOTAL
1	Nutter Corporation	\$666,602.22	\$105,000.00	\$11,000.00	\$6,900.00	\$12,000.00	\$15,000.00	\$28,000.00	\$6,000.00	\$43,000.00	-\$22,000.00	\$871,502.22
2	Brown Contracting	\$994,888.00	\$31,000.00	\$8,900.00	\$5,600.00	\$18,000.00	\$18,300.00	\$34,020.00	\$14,850.00	\$10,000.00	-\$31,000.00	\$1,104,558.00
3	Crestline	\$568,485.00	\$48,800.00	\$22,100.00	\$16,000.00	\$8,400.00	\$17,600.00	\$27,900.00	\$7,700.00	\$5,100.00	-\$28,000.00	\$694,085.00
4	Big River Construction	\$697,180.00	\$59,000.00	\$13,550.00	\$7,300.00	\$13,000.00	\$16,950.00	\$29,700.00	\$6,250.00	\$48,000.00	-\$24,500.00	\$866,430.00
5	3 Kings Environmental Inc	\$743,082.60	\$86,062.00	\$13,746.00	\$7,311.00	\$15,065.00	\$18,725.00	\$29,980.00	\$20,250.00	\$10,175.00	-\$27,500.00	\$916,896.60
6	Paul Brothers, Inc	\$736,345.74	\$39,521.24	\$15,203.74	\$7,581.77	-\$72,912.81	\$20,326.15	\$31,712.16	\$6,541.15	\$9,882.34	-\$34,173.27	\$760,028.21
7	Laskey-Clifton	\$687,687.00	\$17,000.00	\$13,000.00	\$7,400.00	\$17,600.00	\$16,000.00	\$30,600.00	\$6,400.00	\$10,000.00	\$7,000.00	\$812,687.00
8	Colf Construction LLC	\$836,167.00	\$40,000.00	\$6,000.00	\$7,000.00	-\$44,000.00	-\$12,000.00	\$15,000.00	\$2,000.00	\$14,000.00	-\$25,000.00	\$839,167.00

Bid results are preliminary only and do not represent final results.



Port of Hood River
1000 E. Port Marina Drive
Hood River, OR 97031

WALKER | MACY

Nichols Basin
West Edge Trail
HOOD RIVER, OREGON



PROJECT NUMBER: 1334
DRAWN BY: MC REVIEWED BY: CM

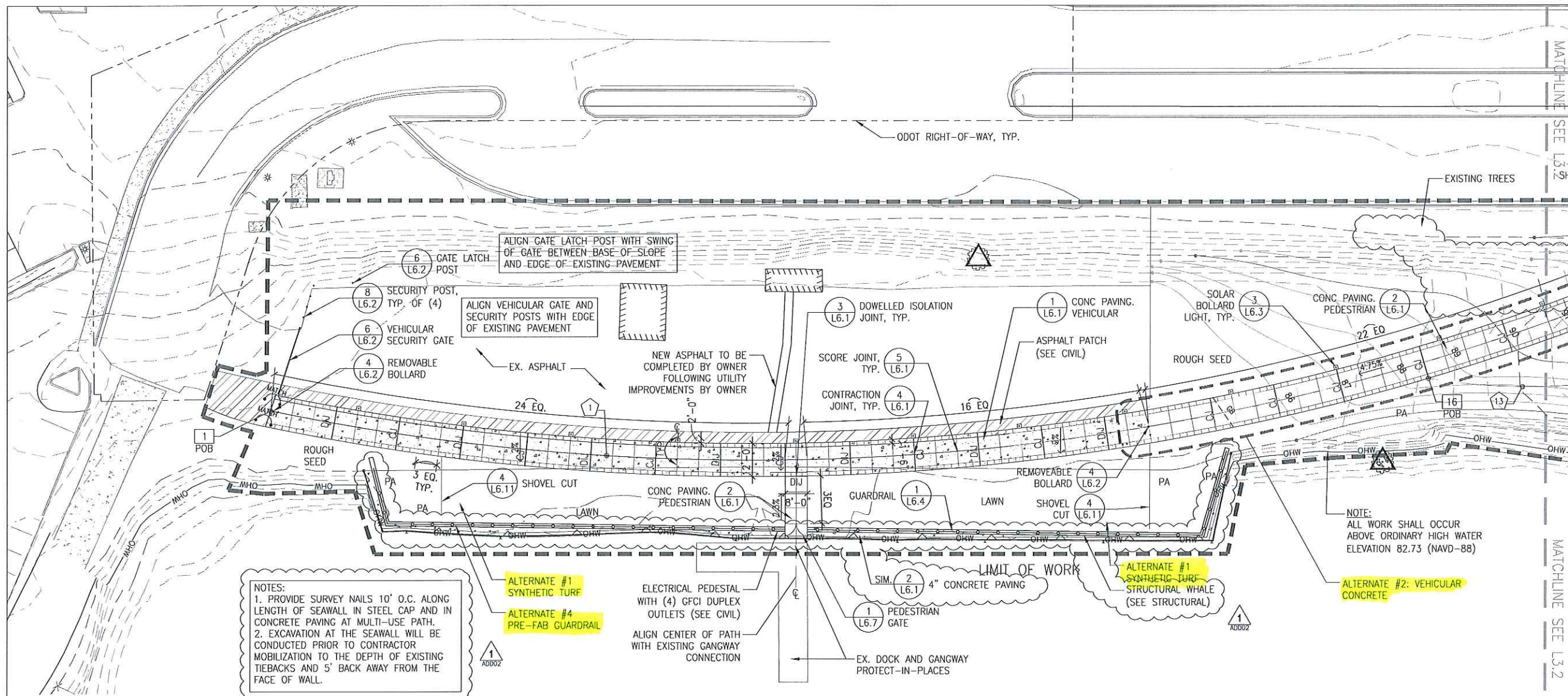
PHASE: 100% Construction Drawings

ISSUE DATE: 11/13/2014

REVISIONS:
1 ADD002 Addendum #02 01/07/2014

MATERIALS/LAYOUT

L3.1



NOTES:
1. PROVIDE SURVEY NAILS 10' O.C. ALONG LENGTH OF SEAWALL IN STEEL CAP AND IN CONCRETE PAVING AT MULTI-USE PATH.
2. EXCAVATION AT THE SEAWALL WILL BE CONDUCTED PRIOR TO CONTRACTOR MOBILIZATION TO THE DEPTH OF EXISTING TIEBACKS AND 5' BACK AWAY FROM THE FACE OF WALL.

CURVE DATA

CURVE NO.	CURVE RADIUS	CURVE LENGTH	CHORD LENGTH	INCLUDED ANGLE
1	855.00'	492.80'	486.00'	33.02'
2	412.00'	314.00'	306.46'	43.67'
3	90.00'	130.72'	119.53'	83.22'
4	102.00'	39.90'	39.64'	22.41'
5	115.00'	121.13'	115.61'	60.35'
6	43.00'	51.19'	48.22'	68.20'
7	60.00'	90.66'	183.48'	86.57'
8	85.00'	104.38'	127.74'	70.36'
9	19.00'	37.64'	31.77'	113.49'
10	47.50'	43.30'	41.82'	52.23'
11	90.00'	127.43'	117.05'	81.12'
12	78.50'	73.35'	116.03'	53.54'
13	211.00'	71.57'	71.23'	19.44'

COORDINATE DATA

COORD. SYMBOL	NORTHING IN FEET	EASTING IN FEET
1	747345.83	7943810.14
2	747831.15	7943784.28
3	748137.37	7943796.43
4	748173.56	7943810.75
5	748275.18	7943755.62
6	748253.81	7943755.00
7	748153.44	7943795.77
8	748201.66	7943795.23
9	748283.80	7943800.48
10	748201.88	7943808.07
11	748153.89	7943808.24
12	748061.00	7943839.32
13	748019.76	7943846.18
14	747903.16	7943835.97
15	747836.22	7943813.19
16	747765.02	7943811.01
17	748095.52	7943870.07
18	748079.39	7943842.69

LAYOUT NOTES

- SITE SURVEY WAS PREPARED BY TERRA SURVEYING ON JANUARY 14, 2014. ALL COORDINATES SHOWN ON THE DRAWINGS ARE BASED UPON THE COORDINATE SYSTEM ESTABLISHED BY THE SURVEYOR. WALKER MACY ASSUMES NO RESPONSIBILITY FOR ACCURACY OF SURVEYED CONDITIONS AS SHOWN. SURVEY INFORMATION IS PROVIDED FOR REFERENCE ONLY.
- DO NOT SCALE FROM THE DRAWINGS. THE LOCATION OF FEATURES NOT SPECIFICALLY DIMENSIONED MAY NOT BE DETERMINED BY SCALE. IF CONFLICTS ARISE IN THE FIELD, CONTACT OWNER'S REPRESENTATIVE FOR RESOLUTION.
- ALL DIMENSIONS ARE TO THE OUTSIDE FACE OF BUILDINGS AND WALLS OR BACK OF CURBS, UNLESS OTHERWISE NOTED.
- ALL CURVED OBJECTS SHALL HAVE SMOOTH, CONTINUOUS CURVES WITH CONSISTENT RADI AS INDICATED. EACH CURVE SHALL MEET ADJACENT CURVES OR LINEAR SECTIONS ON THE TANGENT, UNLESS NOTED OTHERWISE.

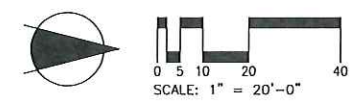
GENERAL NOTES

- CONTRACTOR TO NOTIFY OWNER'S REPRESENTATIVE OF ANY DISCREPANCIES BETWEEN THE PLANS AND THE EXISTING CONDITIONS BEFORE STARTING WORK.
- CONFIRM LOCATION OF ALL UTILITIES PRIOR TO CONSTRUCTION ACTIVITY.
- REFER TO CIVIL FOR PROPOSED GRADING OF SITE.

ALTERNATES

- #1 - SYNTHETIC TURF IN LIEU OF LAWN. (SEE SPEC 32 1813).
- #2 - VEHICULAR CONCRETE (DETAIL 1/L6.1) IN LIEU OF PEDESTRIAN CONCRETE (DETAIL 2/L6.1). JOINT TYPES AND SPACING TO MATCH ADJACENT BASE BID VEHICULAR CONCRETE.
- #3 - PREMIUM CONCRETE FINISH FOR PLAZA AREA IN LIEU OF STANDARD FINISH. PROVIDE INTEGRAL COLOR (RHENOCOLOR L LIQUID COLORING ADMIXTURES BY BASF #RC3501 MYSTIC SHADOW OR AS SELECTED ARCHITECT), 1/8" SAWCUT CONTRACTION AND SCORE JOINTS WITH 1/8" BEVELED EDGES AND EXPOSED AGGREGATE VIA SURFACE RETARDANT.
- #4 - DELETE GUARDRAIL AND GATE AS SHOWN ON SHEETS L6.4, L6.5, L6.6 AND L6.7 AND PROVIDE PRE-MANUFACTURED GUARDRAIL AND GATE (REFER TO SPECIFICATION SECTION 05 7316). SURFACE MOUNT TO STRUCTURAL WHALE (SEE STRUCTURAL) MATCH EXTENTS AS SHOWN ON SHEET L6.4.
- #5 - CIP CONCRETE SEAT WALL 2 AND 60 LF OF CONCRETE MOW BAND.

- #6 - STONE WALL AT SEAT WALL 2 IN LIEU OF CONCRETE. PROVIDE IDAHO MOUNTAIN LEDGESTONE VENEER AND CMU CORE SEAT WALLS PER DETAILS 1,2 ON L6.8. STONE AVAILABLE FROM PACIFIC STONESCPE, 3400B TEXAS ST. ALBANY, OR 97321, 541-928-7678. PERFORM WORK IN ACCORDANCE WITH SPECIFICATION SECTIONS 04 4300-STONE MASONRY AND 04 2000-UNIT MASONRY.
- #7 - STONE WALL AT SEAT WALL 1 IN LIEU OF CONCRETE. PROVIDE IDAHO MOUNTAIN LEDGESTONE VENEER AND CMU CORE SEAT WALLS PER DETAILS 1,2 ON L6.8. STONE AVAILABLE FROM PACIFIC STONESCPE, 3400B TEXAS ST. ALBANY, OR 97321, 541-928-7678. PERFORM WORK IN ACCORDANCE WITH SPECIFICATION SECTIONS 04 4300-STONE MASONRY AND 04 2000-UNIT MASONRY.
- #8 - PROVIDE ONE YEAR LANDSCAPING ESTABLISHMENT AND MAINTENANCE PERIOD. PERFORM WORK IN ACCORDANCE WITH SPECIFICATION SECTION 32 9500.
- #9 - DELETE SOLAR BOLLARD LIGHTS AND ASSOCIATED FOOTINGS.





Port of Hood River
1000 E. Port Marina Drive
Hood River, OR 97031

WALKER | MACY

Nichols Basin
West Edge Trail
HOOD RIVER, OREGON



PROJECT NUMBER: 1334
DRAWN BY: MC REVIEWED BY: CM

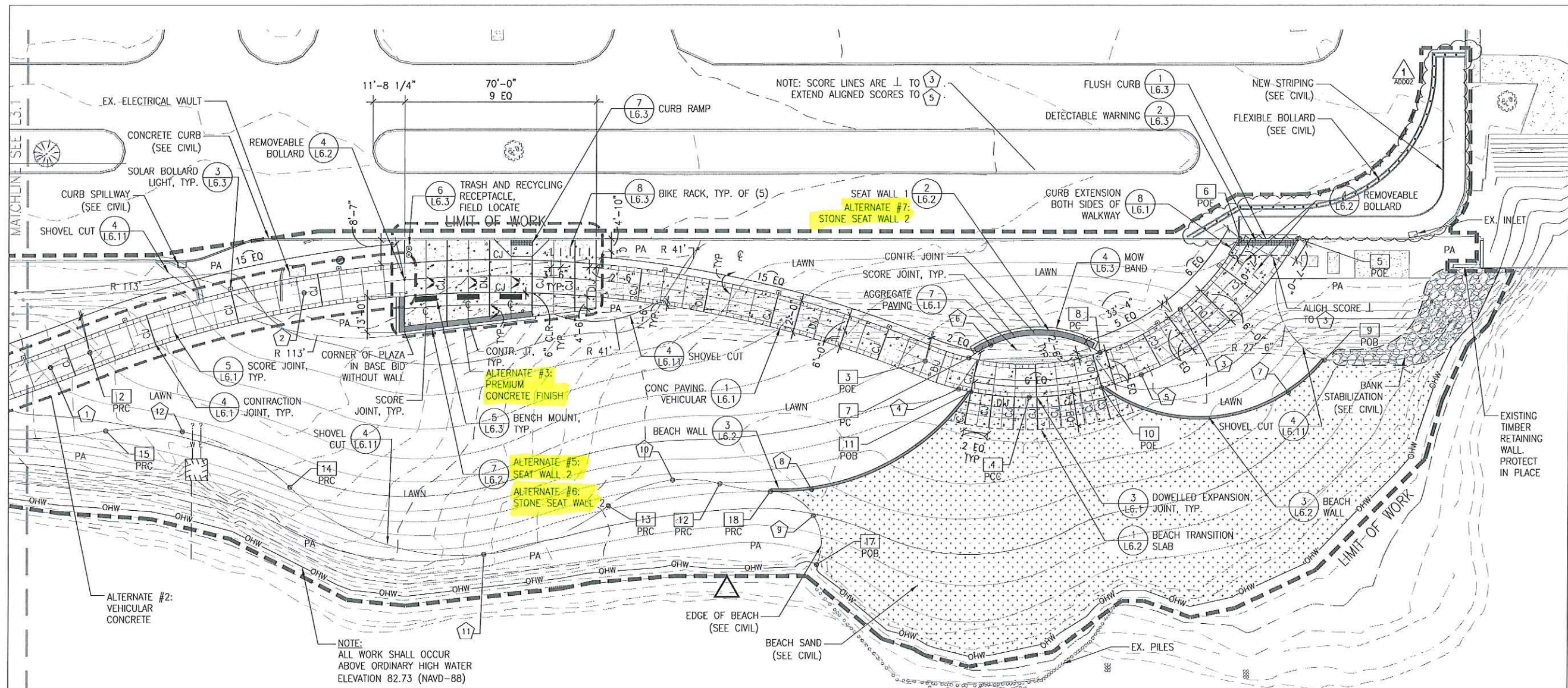
PHASE: 100% Construction Drawings

ISSUE DATE: 11/13/2014

REVISION: 1 ADD002 Addendum #02 01/07/2014

MATERIALS/LAYOUT

L3.2



CURVE DATA

CURVE NO.	CURVE RADIUS	CURVE LENGTH	CHORD LENGTH	INCLUDED ANGLE
1	855.00'	492.80'	486.00'	33.02'
2	412.00'	314.00'	306.46'	43.67'
3	90.00'	130.72'	119.53'	83.22'
4	102.00'	39.90'	39.64'	22.41'
5	115.00'	121.13'	115.61'	60.35'
6	43.00'	51.19'	48.22'	68.20'
7	60.00'	90.66'	183.48'	86.57'
8	85.00'	104.38'	127.74'	70.36'
9	19.00'	37.64'	31.77'	113.49'
10	47.50'	43.30'	41.82'	52.23'
11	90.00'	127.43'	117.05'	81.12'
12	78.50'	73.35'	116.03'	53.54'
13	211.00'	71.57'	71.23'	19.44'

COORDINATE DATA

COORD. SYMBOL	NORTHING IN FEET	EASTING IN FEET
1	747345.83	7943810.14
2	747831.15	7943784.28
3	748137.37	7943796.43
4	748173.56	7943810.75
5	748275.18	7943755.62
6	748253.81	7943755.00
7	748153.44	7943795.77
8	748201.66	7943795.23
9	748283.80	7943800.48
10	748201.88	7943808.07
11	748153.89	7943808.24
12	748061.00	7943839.32
13	748019.76	7943846.18
14	747903.16	7943835.97
15	747836.22	7943813.19
16	747765.02	7943811.01
17	748095.52	7943870.07
18	748079.39	7943842.69

LAYOUT NOTES

- SITE SURVEY WAS PREPARED BY TERRA SURVEYING ON JANUARY 14, 2014. ALL COORDINATES SHOWN ON THE DRAWINGS ARE BASED UPON THE COORDINATE SYSTEM ESTABLISHED BY THE SURVEYOR. WALKER MACY ASSUMES NO RESPONSIBILITY FOR ACCURACY OF SURVEYED CONDITIONS AS SHOWN. SURVEY INFORMATION IS PROVIDED FOR REFERENCE ONLY.
- DO NOT SCALE FROM THE DRAWINGS. THE LOCATION OF FEATURES NOT SPECIFICALLY DIMENSIONED MAY NOT BE DETERMINED BY SCALE. IF CONFLICTS ARISE IN THE FIELD, CONTACT OWNER'S REPRESENTATIVE FOR RESOLUTION.
- ALL DIMENSIONS ARE TO THE OUTSIDE FACE OF BUILDINGS AND WALLS OR BACK OF CURBS, UNLESS OTHERWISE NOTED.
- ALL CURVED OBJECTS SHALL HAVE SMOOTH, CONTINUOUS CURVES WITH CONSISTENT RADI AS INDICATED. EACH CURVE SHALL MEET ADJACENT CURVES OR LINEAR SECTIONS ON THE TANGENT, UNLESS NOTED OTHERWISE.

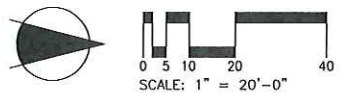
GENERAL NOTES

- CONTRACTOR TO NOTIFY OWNER'S REPRESENTATIVE OF ANY DISCREPANCIES BETWEEN THE PLANS AND THE EXISTING CONDITIONS BEFORE STARTING WORK.
- CONFIRM LOCATION OF ALL UTILITIES PRIOR TO CONSTRUCTION ACTIVITY.
- REFER TO CIVIL FOR PROPOSED GRADING OF SITE.

ALTERNATES

- #1 - SYNTHETIC TURF IN LIEU OF LAWN. (SEE SPEC 32 1813)
- #2 - VEHICULAR CONCRETE (DETAIL 1/L6.1) IN LIEU OF PEDESTRIAN CONCRETE (DETAIL 2/L6.1). JOINT TYPES AND SPACING TO MATCH ADJACENT BASE BID VEHICULAR CONCRETE.
- #3 - PREMIUM CONCRETE FINISH FOR PLAZA AREA IN LIEU OF STANDARD FINISH. PROVIDE INTEGRAL COLOR (RHENOCOLOR L LIQUID COLORING AD MIXTURES BY BASF #RC3501 MYSTIC SHADOW OR AS SELECTED ARCHITECT). SAW CUT CONTRACTION AND SCORE JOINTS WITH 1/8" BEVELED EDGES AND EXPOSED AGGREGATE VIA SURFACE RETARDANT.
- #4 - DELETE GUARDRAIL AND GATE AS SHOWN ON SHEETS L6.4, L6.5, L6.6 AND L6.7 AND PROVIDE PRE-MANUFACTURED GUARDRAIL AND GATE (REFER TO SPECIFICATION SECTION 05 7316). SURFACE MOUNT TO STRUCTURAL WHALE (SEE STRUCTURAL). MATCH EXTENTS AS SHOWN ON SHEET L6.4.
- #5 - CIP CONCRETE SEAT WALL 2 AND 60 LF OF CONCRETE MOW BAND.

- #6 - STONE WALL AT SEAT WALL 2 IN LIEU OF CONCRETE. PROVIDE IDAHO MOUNTAIN LEDGESTONE VENEER AND CMU CORE SEAT WALLS PER DETAILS 1,2 ON L6.8. STONE AVAILABLE FROM PACIFIC STONESCAPES, 34008 TEXAS ST. ALBANY, OR 97321, 541-928-7678. PERFORM WORK IN ACCORDANCE WITH SPECIFICATION SECTIONS 04 4300-STONE MASONRY AND 04 2000-UNIT MASONRY.
- #7 - STONE WALL AT SEAT WALL 1 IN LIEU OF CONCRETE. PROVIDE IDAHO MOUNTAIN LEDGESTONE VENEER AND CMU CORE SEAT WALLS PER DETAILS 1,2 ON L6.8. STONE AVAILABLE FROM PACIFIC STONESCAPES, 34008 TEXAS ST. ALBANY, OR 97321, 541-928-7678. PERFORM WORK IN ACCORDANCE WITH SPECIFICATION SECTIONS 04 4300-STONE MASONRY AND 04 2000-UNIT MASONRY.
- #8 - PROVIDE ONE YEAR LANDSCAPING ESTABLISHMENT AND MAINTENANCE PERIOD. PERFORM WORK IN ACCORDANCE WITH SPECIFICATION SECTION 32 9500.
- #9 - DELETE SOLAR BOLLARD LIGHTS AND ASSOCIATED FOOTINGS.



Executive Director's Report

January 20, 2015

Staff & Administrative

- I will be late for the Commission meeting due to a personal obligation in Portland. I hope to join the meeting around 6:45 p.m.
- The Port of Cascade Locks Commissioners and staff will join us for a joint work session at 7:00. They are interested in discussing their ongoing work on the Bridge of the Gods including a 10-year capital plan and new tolling technology as well as regional issues, and advocacy efforts like the OneGorge Coalition.
- Please let Laurie know if you are interested in attending the SDAO annual conference in Eugene in February. Genevieve Scholl and Anne Medenbach will be attending.
- Ray Gaulke, who served as Port Commissioner from 1961-1971 has passed away. We will send a sympathy card on behalf of the Port Commission and staff to the family and a donation to the OHSU School of Dentistry will be made in his honor.
- A meeting of the OneGorge Coalition took place on January 14 at ICE in White Salmon. Attendance was excellent and there was good discussion about regional priorities and future advocacy steps. Attached is the latest (draft) Fact Sheet regarding the Gorge bridges and a Participant List.

Recreation

- Lindblad Expeditions has submitted their cruise ship reservation request for the National Geographic Sea Lion and Sea Bird, respectively, for this fall. The vessels are scheduled to overnight at the Cruise Ship Dock in the Marina on twelve occasions. This is a significant increase from the last few years.
- At ODOT's suggestion, I attended a meeting of the Connect V final review committee in Portland on January 7 to advocate for additional funding for the NBWE project. The majority of the discussion revolved around the dock project at the Port of St. Helens that had been denied by the Oregon Transportation Commission last year. In the end, that project was again approved for funding. There was no chance to advocate for our project.
- We have three significant pedestrian trail projects that are headed for construction this spring and summer. The following is a brief status update. Staff will present additional detail at the meeting.
 - The Pedestrian Bridge Trail is out for bid by ODOT. Bid opening will occur January 29.
 - The bid opening for the NBWE project occurred on January 13. Crestline is the apparent low bidder. Construction is expected to commence in March. Staff is working to confirm any required permits.

- Crestline was low bidder for the Hook Launch project. The team is developing a schedule for the work. Confirmation from the COE of a pool draw down is presenting some challenges.

Development

- Based on input from each Commissioner that provided consensus direction, I will execute a short-term lease with Gorge Ecumenical Ministries for the vacant Visitor's Center at the Expo Building for use by the Hood River Warming Shelter. The Shelter will operate from January 23 until March 8. This is a month-to-month lease so we can determine after four weeks if the shelter is operating successfully. Staff will notify our tenants in the area.
- The roofing contractor for the Maritime Building has returned to inspect the roof and carry out repairs where leaks have occurred. They will return for additional work the week of January 19.
- Sheppard's is reviewing their draft DDA and working with their architect to prepare concept plans. A pre-application conference has been scheduled with the City later this month.
- Staff is working with counsel to prepare Amendment #2 to the DDA with Key Development for the Expo property. The amendment that was approved by the Commission in December anticipated completion of Amendment #2 by January 27; however, this will likely not be completed until February.
- It appears now that the deadline to appeal the Waterfront Refinement Plan has passed and no appeal has been submitted to LUBA.

Bridge/Transportation

- The application to designate replacement of the Hood River Bridge and repair of the Bridge of the Gods as a "Project of National and Regional Significance" has been submitted and is currently under review by the FHWA.
- December saw a significant increase (about 30%) in the amount of monthly bridge tickets sold. We believe this was due to the reduction in the discount for tickets that commenced January 1.
- The ODOT Dive Team was expected to carry out an underwater inspection of the Bridge on January 14 or 15. The dive was dependent upon the clarity of the water.
- Some Toll staff have been very consistent in their expressed desire to park just east of the booth during working hours. Reasons range from safety concerns (crossing southbound lanes) to health (climbing the stairs) and security (accessing their vehicle at night). We have instituted a policy whereby any employee that wishes to park near the booth and not in the lower parking lot must submit a specific request and state the reason, and obtain office approval. Four such requests have been approved.

OneGorge Participant List with Classifications

Working Document

Last Update: 1.16.2015

#	Classification	Type	Organization	First Name	Last Name	Title	Email	Phone
	TBD	Agency	Columbia River Gorge Commission	Terry	Cullen, AICP	Principal Planner	terry.cullen@gorgecommission.org	509-493-3323
	TBD	Agency	Columbia River Gorge Commission	Lorrie	DeKay	Commissioner	lorrie.dekay@gorgecommission.org	509-493-3323
	TBD	County	Hood River County	David	Meriwether	Administrator	david.meriwether@co.hood-river.or.us	541-386-3970
	TBD	County	Hood River County	John	Roberts	Community Development Director	john.roberts@co.hood-river.or.us	541-387-6840
	TBD	Business	Nestle	Dave	Palais	Natural Resource Manager	dave.palais@waters.nestle.com	
	TBD	Business	New York Life Insurance Company	David	Roth	Licensed Agent	dvroth@ft.newyorklife.com	
	TBD	Port	Port of Klickitat	Marc	Thornsbury	Executive Director	mthornsbury@portofklickitat.com	509-493-1655
	TBD	County	Skamania County	Bob	Hamlin	Commissioner	hamlin@co.skamania.wa.us	509-427-3700+
	2	Supporter	Columbia River Insurance	Jon	Davies	Partner	jdavies@portofhoodriver.com	541-386-2444
	2	Supporter	Duckwall Fruit	Fred	Duckwall	CEO		
	2	Supporter	Everybody's Brewing	Christine	Ellenberger	Owner	Christine@everybodysbrewing.com	503-381-4308
	1	MEMBER	Short Supply	Brian	Shortt	Owner	bshortt@portofhoodriver.com	503-228-2525
	1	MEMBER	PA Advocate	Michelle	Giguere	Director, Government Affairs	mgiguere@balljanik.com	
	1	MEMBER	PA Advocate	Hal	Hiemstra	Director, Government Affairs	hhiemstra@balljanik.com	202-638-3307
	1	MEMBER	Bear Mountain Forest Products	Bob	Sourek			
	1	MEMBER	City of Cascade Locks	Gordon	Zimmerman	Administrator	gzimmerman@cascade-locks.or.us	541-374-8484
	1	MEMBER	Columbia Market	Albert	Choi	Owner	albertschoi@hotmail.com	
	1	MEMBER	Columbia River Gorge Commission	Darren	Nichols	Executive Director	darren.nichols@gorgecommission.com	509-493-3323
	1	MEMBER	Custom Interface	Nancy	White	CEO	NancyW@custominterface.net	509-493-8756
	1	MEMBER	Greater Goldendale Chamber of Commerce	Earlene	Sullivan	Executive Director	execdir@goldendalechamber.org	509-773-3400
	1	MEMBER	Green Living Journal	Gary	Munkhoff	Owner	gary@greenlivingjournal.com	
	1	MEMBER	Innovative Composite Engineering (ICE)	Mike	Foley	VP Operations	MikeF@innce.com	509-493-4484
	1	MEMBER	Insitu	Jenny	Taylor	Facilities Director	Jenny.Taylor@Insitu.com	
	1	MEMBER	Insitu	Jill	Vacek	Comm. Director	Jill.Vacek@Insitu.com	509-493-6439
	1	MEMBER	Light Wave Video	John	Hardham	Owner	lightwavevideo@gmail.com	
	2	MEMBER	CECEDD	Ken	Bailey	Board Member	Ken.bailey@orchardviewfarms.com	
	1	MEMBER	CECEDD	Amanda	Hoey	Executive Director	Amanda@mcedd.org	541-296-2266
	3	MEMBER	Mt. Adams Chamber of Commerce	Maria	Foley	Executive Director	info@mtadamschamber.com	509-493-3630
	1	MEMBER	Mt. Adams Chamber of Commerce	Tamara	Kaufman	Former Executive Director	tamarakaufman@gmail.com	509-637-3340
	2	MEMBER	Mt. Adams Chamber of Commerce	Cheryl	Park	President	cheryllees54@msn.com	509-493-3630
	2	MEMBER	Mt. Adams Chamber of Commerce	Jess	Groves	Executive Director	info@mtadamschamber.com	509-493-3630
	1	MEMBER	Port of Cascade Locks	Paul	Koch	President	pkoch@portofcascadelocks.org	541-374-8619
	3	MEMBER	Port of Cascade Locks	Rich	McBride	Interim General Manager	rmcbride@portofhoodriver.com	541-386-1645
	1	MEMBER	Port of Hood River	Michael	McElwee	Executive Director	mcelwee@portofhoodriver.com	541-386-1645
	2	MEMBER	Port of Hood River	Genevieve	Schoil	Communications/Special Projects	gschoil@portofhoodriver.com	541-386-1645
	1	MEMBER	Port of Skamania	John	McSherry	Executive Director	john@portofskamania.org	541-490-5237
	3	Interested	Wet Planet Rafting	Jaco	Klinkenberg	Owner	jaco@wetplanetwhitewater.com	509-493-8989
	4	Interested	City of Bingen	Betty	Barnes	Mayor	mayor@bingenwashington.org	509-493-2122
	3	Interested	City of Bingen	Jan	Brending	Mayor	administrator@bingenwashington.org	509-493-2122
	3	Interested	City of White Salmon	David	Poucher	Officer	dspatz474@gmail.com	509-493-1231
	3	Interested	Columbia Gorge Community College	Dan	Spatz	Executive Director	joelm@mid-columbiahousingauthr	541-296-5462
	3	Interested	Columbia Gorge Housing Authority	Joel	Madsen	Director of Human Resources	TammaraT@custominterface.net	509-281-9337
	1	Interested	Custom Interface	Tammara	Tippel	Administrative Assistant	heidl.ochsner@co.hood-river.or.us	541-387-6826
	1	Interested	Hood River County	Heidi	Ochsner	Executive Director	director@hoodriver.org	541-386-2000
	1	Interested	Hood River County Chamber of Commerce	Mike	Glover	Attorney	brakeadvocacy@gmail.com	704-999-1347
	3	Interested	Joyce Brake, Attorney	Joyce	Brake	Attorney	boccc@klickitatcounty.org	509-773-4612
	3	Interested	Klickitat County	General Mail Box	Arens	Executive Director	John.Arens@mccog.com	541-298-4101
	1	Interested	Mid-Columbia Council of Governments	John	Arens			

OneGeorge Participant List with Classifications

Working Document

Last Update: 1.16.2015

3 Interested	Business	North Shore Medical Group	Cindy	Robertson	Administrator	robertsonc@northshore-medical.c	509-493-2113
3 Interested	Port	Port of The Dalles	Bob	McFadden	President	bob@thegoldenkey.com	541-298-4148
3 Interested	Business	SDS Lumber	Jason	Spadaro	President	jasons@sdslumber.com	509-493-2155
3 Interested	Chamber	Skamania County Chamber of Commerce	Casey	Roeder	Executive Director	casey@skamania.org	509-427-8911
3 Interested	Economic Development	Skamania County Economic Development Co	Kari	Fagerness	Office Manager	kfagemess@skamania-edc.org	509-427-5110
3 Interested	Business	Sustainable Travel International	Brian	Mullis	Owner	brianm@sustainabletravel.org	720-273-2975
Interested	Transportation	SW Washington RTC	Matt	Ransom	Executive Director	Matt.Ransom@rtc.wa.gov	
Interested	Transportation	SW Washington RTC	Dale	Robbins	Executive Director	Dale.Robbins@rtc.wa.gov	
3 Interested	Newspaper	The Enterprise	Amber	Marra	Reporter	amarra@whitesalmonenterprize.c	509-493-2112
3 Interested	Business	Zepher, Inc.	Kirsten	Dennis	Office Manganer	Kirsten.Dennis@zepherinc.com	509-637-2520
3 Interested	Business	Zepher, Inc.	Andy	Mack	Owner	Andy.mack@zepherinc.com	509-637-2520

DRAFT

the columbia gorge

Two Essential Bridges

Providing safe, cross-river connections for people to ports and places

Thousands of commuters. Millions of tourists. Tens of millions of dollars of goods and services. Hood River, Klickitat, and Skamania counties. What is the connection between all of these? Why, bridges, of course. Without these man-made structures, there would be far less commerce, access and enjoyment of our incredibly beautiful and diverse region.



INVESTING IN THE FUTURE

Keeping both bridges in good working order is becoming increasingly more difficult. While short-term capital improvements can extend the life of bridge components, ultimately both bridges are functionally obsolete and must be replaced to avoid:

- Corrosion
- Deck weld cracking
- Seismic vulnerability
- Steel and concrete deterioration

Fortunately, bridge safety and viability assessments like the SR-35 Columbia River Crossing Study have been completed. Continued planning for bridge replacement is imperative, however, especially determining a path forward for new, seismically sound connectors.

numbers

THE HOOD RIVER-WHITE SALMON INTERSTATE BRIDGE

Truss bridge with a vertical lift spanning the Columbia River between Hood River, Oregon and White Salmon-Bingen, Washington, connecting I-84/U.S. 30 to Washington's SR 14.

- Completed construction: 1924
- Annual transport: \$75 million in goods
- Annual traffic: 3.6 million vehicle crossings
- Horizontal clearance: 246 ft
- Lanes: Two lanes, each 9 ft 4 in wide
- Length: 4,418 ft
- Lift span closed: 67 ft (water level dependent)
- Lift span full open: 148 ft (water level dependent)
- Max deck clearance: 14 ft
- Maximum weight: 80,000 lb
- Owned and operated by the Port of Hood River since 1950



bridges BY THE



THE BRIDGE OF THE GODS

Steel truss cantilever bridge spanning the Columbia River to connect Cascade Locks, Oregon with the Washington communities of Stevenson and North Bonneville.

- Completed construction: 1926
- Annual transport: \$35 million in goods
- Annual traffic: 1.6 million vehicle crossings
- Height above water: 140 ft
- Horizontal clearance: 655 ft
- Lanes: Two lanes, each 12 ft wide
- Length: 1,858 ft
- Max deck clearance: 14 ft 6 in
- Maximum weight: 80,000 lb
- Owned and operated by the Port of Cascade Locks since 1961

the columbia gorge

Two Essential Bridges

Public Safety, Economic Vitality, Easy Access

The bridges of the Columbia River Gorge are not "nice-to-have" optional connectors. Both bridges are functionally obsolete and are **essential transportation links** that connect a shared workforce, and provide much-needed access to retail and public services.

PROVIDES CROSS-RIVER ACCESS TO WASHINGTON AND OREGON

- The majority of regional employment is located in Oregon.
- Commuters make an average of 10-15 percent of daily trips.
- Nine percent of workers living in Klickitat County commute to Oregon's Wasco and Hood River counties.
- Six percent of workers living in Hood River County commute to Klickitat County.
- Several Oregon-based businesses estimate that 20-30 percent of their employees commute from Washington.

SUPPORTS THE REGIONAL ECONOMY

- The Dalles and Hood River are recognized as the regional economic centers.
- As an economic region, people travel the region extensively, using the bridges to get to work, play and pleasure. River is the economic center of the region.
- Per-capita retail sales in Klickitat County are only about one-fourth of Hood River County's, and the City of Hood River accounts for 90 percent of the estimated \$260 million in retail sales occurring in White Salmon, Bingen and Hood River combined (2007).
- Because the majority of retail and other services are located in Hood River County, Washington residents depend on the bridges for access to shops and businesses.
- The bridges' connections limit the miles commuters must drive, helping to lower pollution in the region.

ENABLES INTERSTATE TRANSPORT OF GOODS AND SERVICES

- The majority of freight goods crossing the bridges are wood products and fruit.
- Because the bridges facilitate easy cross-river freight movement, manufacturers and producers can choose regional businesses for their material processing.
- Some 10-20 percent of manufactured products and fruit grown here cross the bridges, at a value \$35-\$75 million annually (based on business-provided estimates, 2007).

OPENS UP ACCESS TO RECREATION AND TOURISM

- Visitors rely on the bridges for access to attractions and recreational opportunities on both sides of the river, including the growing wine industry.
- The bridges also provide access to the many retail services and accommodations available primarily in Hood River.
- The bridges offer visitors a direct connection between the main tourism centers, preventing the inconvenience of traveling miles to the next-nearest river crossing.

SUPPLIES EMERGENCY SERVICES ACCESS

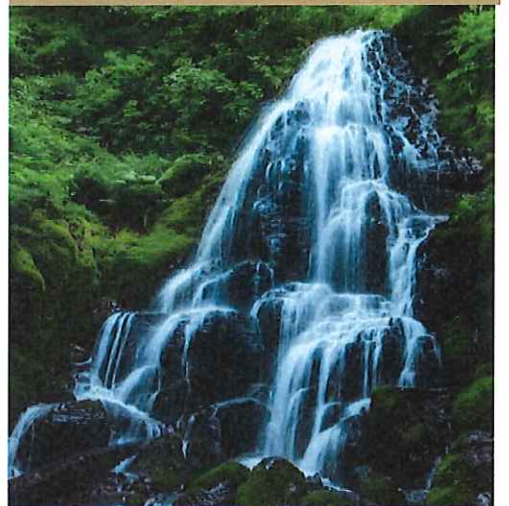
- The bridges allow local emergency service providers the opportunity to combine resources.
- The bridges offer visitors a direct connection between the main tourism centers.
- If one bridge is closed, visitors must drive nearly 60 miles to travel to another community that is located directly across the river.
- Inter-local agreements among regional fire services promote mutual aid on 911 emergencies as well as shared resources, such as personnel, funding and equipment.
- The bridges enable quicker emergency response time to Portland-area hospitals and trauma centers.
- Tribal fishers continue the centuries-old tradition of their ancestors through the historical Indian Salmon Harvest.



bridges THEN & NOW

Every generation has experienced the power and possibilities of the Gorge's bridges. Since the 1920s, the Hood River-White Salmon Interstate Bridge and the Bridge of the Gods in Cascade Locks have enabled countless journeys and untold commerce. They have been essential to economic vitality and quality of life in the region.

Throughout their lifetime, both bridges have been well maintained, keeping them safe, albeit functionally obsolete, going into their ninth decade. Neither bridge, however, can continue to safely keep pace with modern-day transport needs and increasing demands. Neither bridge can maintain structural capacity indefinitely.



We represent the public, private and non-profit sectors coming together to advocate for regional needs that are foundational to a strong and sustainable Gorge economy...

**ONE community, ONE economy,
ONE future.**



Port of
Hood River

Providing for the region's economic future.

INDUSTRIAL/COMMERCIAL FACILITIES • AIRPORT • INTERSTATE BRIDGE • MARINA

1000 E. Port Marina Drive • Hood River, OR 97031 • (541) 386-1645 • Fax: (541) 386-1395 • www.portofhoodriver.com • Email: porthr@gorge.net

January 7, 2015

Hood River City Council
211 2nd Street
Hood River OR 97031

Re: Urban Renewal Agency Appointment

Dear Council President,

The Port of Hood River respectfully requests that the Hood River City Council appoint Port Commissioner Jon Davies to the Urban Renewal Agency Board for a two-year term expiring December 31, 2016.

Contact information for Jon Davies is as follows:

Mailing Address: 3409 Brookside Drive, Hood River OR 97031
Email Address: jdavies@portofhoodriver.com
Phone Numbers: (541) 490-2531 (cell); (541) 386-2444 (work)

If approved, the Port requests confirmation of the appointment. This confirmation may be sent electronically to porthr@gorge.net

Respectfully,

Michael S. McElwee
Executive Director

Cc: Port of Hood River Commission

Commission Calendar

February 2015

January '15

S M T W T F S
 4 5 6 7 8 9 10
 11 12 13 14 15 16 17
 18 19 20 21 22 23 24
 25 26 27 28 29 30 31

March '15

S M T W T F S
 1 2 3 4 5 6 7
 8 9 10 11 12 13 14
 15 16 17 18 19 20 21
 22 23 24 25 26 27 28
 29 30 31

April '15

S M T W T F S
 5 6 7 8 9 10 11
 12 13 14 15 16 17 18
 19 20 21 22 23 24 25
 26 27 28 29 30

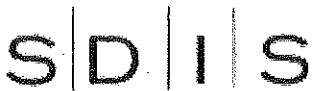
Sunday	Monday	Tuesday	Wednesday	Thursday	Friday	Saturday
1	2	3 Commission Mtg, 5pm	4	5	6 SDAO Annual Conference Eugene:Scholl/Medenbach	7 SDAO Annual Conference
8 SDAO Annual Conference	9	10	11 OneGeorge Coalition, 3pm	12	13	14 Valentines Day
15	16 Presidents' Day Office Closed KTHR Radio, 8am	17 Commission Mtg, 5pm	18	19	20	21
22	23	24	25	26	27	28
1	2	3	4	5	6	7
8 Daylight Saving	9 Notes					

Commission Memo

To: Commissioners
From: Fred Kowell
Date: January 20, 2015
Re: SDIS Property and Liability Insurance Renewal

The Port uses Special District's insurance services (SDIS) for its property and liability insurance. The 2015 insurance premium is \$69,263, or a 10% decrease over 2014. The Port is part of the SDIS longevity property/casualty program which provides its members with a credit or dividend for exhibiting good risk management in its operations and administration. Staff believes that we will continue to benefit from our current safety and risk management practices.

RECOMMENDATION: Approve annual SDIS property and liability insurance policy and authorize insurance premium payment of \$69,263.



SPECIAL DISTRICTS
INSURANCE SERVICES

RECEIVED
DEC 29 2014

INVOICE

Date: 02-Dec-14

Named Port of Hood River
Participant: 1000 E Port Marina Dr
Hood River, OR 97031

Agent: Columbia River Insurance
P.O. Box 500
Hood River, OR 97031-0059

Invoice #	Entity ID	Effective Date	Expiration Date	Invoice Date
30P16164-182	16164	01-Jan-15	31-Dec-15	02-Dec-14

2015 Longevity
Credit Amount

\$6,957

Coverage	Contribution
General Liability	
General Liability Contribution	\$22,554
Less Best Practices Credit	(\$2,374)
Adjusted Contribution	\$20,180
Auto Liability	
Auto Liability Contribution	\$1,929
Less Best Practices Credit	(\$193)
Adjusted Contribution	\$1,736
Non-owned and Hired Auto Liability	\$150
Auto Physical Damage	\$1,212
Hired Auto Physical Damage	\$0
Excess Liability	\$5,976
Property	
Property Contribution	\$38,909
Less Best Practices Credit	(\$3,891)
Adjusted Contribution	\$35,018
Earthquake	\$4,690
Flood	\$0
Equipment Breakdown / Boiler and Machinery	\$0
Crime	\$301
Total:	\$69,263

Coverage is provided for only those coverages indicated above for which a contribution is shown or that are indicated as "included." Your payment evidences "acceptance" of this renewal. Please use the payment coupon on the following page to help us apply your payment correctly.

Payment instructions are on the following page.

Commission Memo

To: Commissioners
From: Liz Whitmore
Date: January 20, 2015
Re: Pedestrian Bridge Trail

The Port is required to provide a local match and cover any additional project costs for the Pedestrian Bridge Trail project through ODOT. The estimated amount is \$102,113 which includes a 10% overage. Funds in the LGIP that are not used for the project will be returned to the Port.

RECOMMENDATION: Approve the Transfer of \$102,113 into the POHR Account with the Local Government Investment Pool (LGIP) for the Pedestrian Bridge Trail project.



Oregon

John A. Kitzhaber, MD, Governor

January 5, 2015

Department of Transportation
Transportation Development Division
Mill Creek Office Building
555 13th Street NE, Suite 2
Salem, OR 97301-4178

**ATTN MICHAEL MCELWEE EXECUTIVE DIRECTOR
PORT OF HOOD RIVER
1000 E PORT MARINA DR
HOOD RIVER OR 97031**

File Code:

Subject: PORT OF HOOD RIVER FRONTAGE RD PEDESTRIAN IMPRVTS
Project #3490(011)
EA # CON03747
Agreement #23922

We have programmed funds with FHWA for this project. Per our agreement #23922, the Port of Hood River is to deposit their share of the construction costs. The following is a summary of the estimated costs for the project:

Estimated construction engineering	\$94,782.51
Estimated construction	\$226,728.50
Less Federal Funds	(\$228,681.80)
Estimated Match	\$92,829.21

Amount Due (110% rounded) \$102,113.00

You may use one of the three options for payment outlined in our attachment. Please submit your advance deposit upon receipt of this notice. Please return the remittance copy of this letter to ensure that the proper project is credited.

When making your advance deposit please make it based on the agreement number and not on the project number. This will allow us to transfer funds from one project phase to another.

If you have any questions concerning this request please feel free to call me at 503-986-3224.

Thank you for your prompt attention to this matter.

Sincerely,

Jennifer Jones
Program and Funding Services
jennifer.d.jones@odot.state.or.us

RECEIVED
JAN - 8 2015
Fred
cc: Michael, Liz

Attachments

cc: Bret Richards ODOT Region 1
ODOT Financial Services
Project File





Port of
Hood River

Providing for the region's economic future.

INDUSTRIAL/COMMERCIAL FACILITIES • AIRPORT • INTERSTATE BRIDGE • MARINA

1000 E. Port Marina Drive • Hood River, OR 97031 • (541) 386-1645 • Fax: (541) 386-1395 • www.portofhoodriver.com • Email: porthr@gorge.net

**IRREVOCABLE
LIMITED POWER OF ATTORNEY
LOCAL GOVERNMENT INVESTMENT POOL**

The Port of Hood River, hereby appoints the Investment Manager of Oregon State Excess fund, as attorney-in-fact for it, and said officer shall have the Power of Attorney to negotiate transfers to the Oregon Department of Transportation and delivered to said officer by either the Chief Financial Officer or Staff delegated the authority for the State of Oregon, for the purpose of depositing the proceeds of such fund transfers to the account of the Oregon Department of Transportation, with the Oregon State Treasurer.

The Port of Hood River, has deposited with the State of Oregon Investment Pool the sum of \$ 102,113.00 in Account No. 4345. The purpose of this deposit is to create a fund from which to pay its share of the cost of certain improvements to be made in connection with Project Number 3490(009) & (010), Design and Construct Multi-Use path.

This document authorizes the Chief Financial Officer of the Oregon Department of Transportation to draw, or delegate the authority to draw, on the account to pay project costs. The signature of the State upon a voucher in a form acceptable to the custodians of the State Investment Pool shall constitute proper authority for the withdrawal of money up to the amount of the deposit identified above.

The authorized signatures shall be furnished by the Chief Financial Officer of the Oregon Department of Transportation to the State Treasury Department.

The Port of Hood River can withdraw interest earned by this account, as it deems appropriate.

The Port of Hood River Board of Commissioners, delegates authority to the Finance Manager, to execute appropriate fund transactions.

By the power vested in the Finance Manager, the Power of Attorney is authorized by Port of Hood River Board of Commissioners, this 20th day of January, 2015.

Approved by: _____
Rich McBride

Title: President – Port of Hood River Board of Commissioners

Date: January 20, 2015