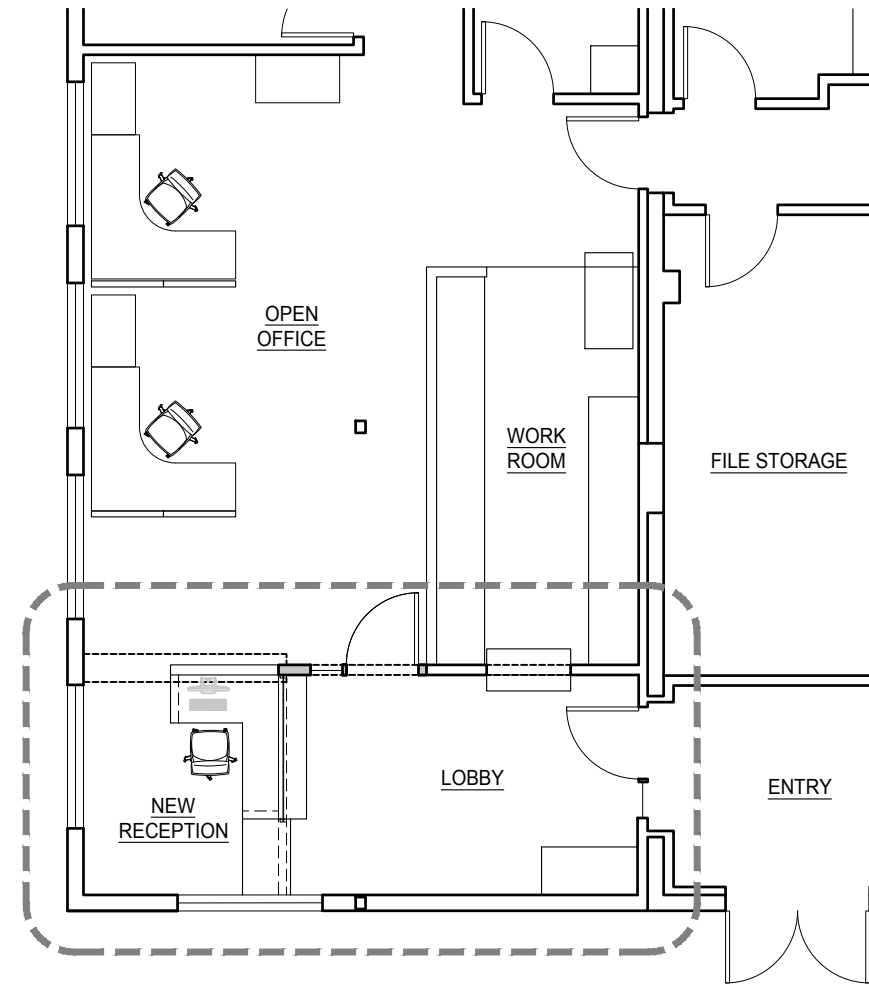


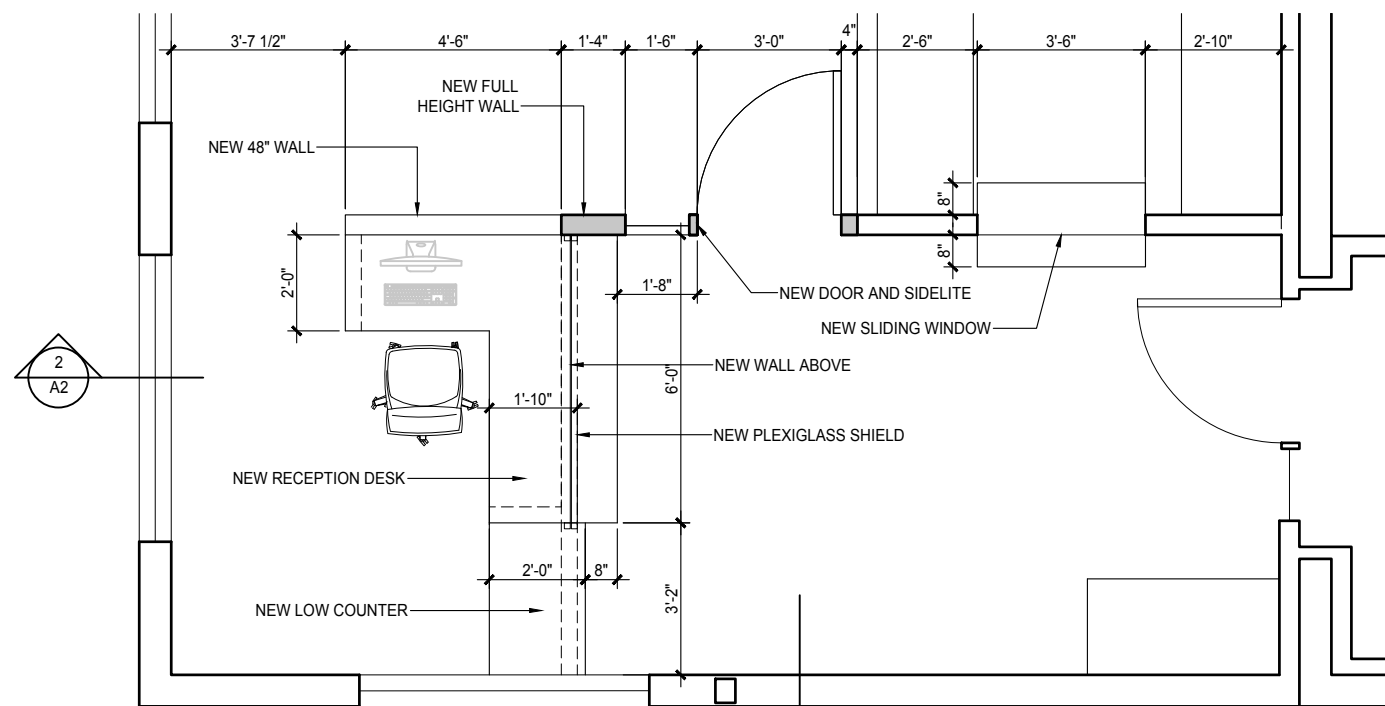
2 DEMOLITION PLAN

SCALE: 1/2" = 1'-0" (ON 22X34) 1/4" = 1'-0" (ON 11X17)



1 FRONT OFFICE REFERENCE PLAN

SCALE: 1/4" = 1'-0" (ON 22X34) 1/8" = 1'-0" (ON 11X17)



1 FRONT OFFICE RECEPTION PLAN

SCALE: 1/2" = 1'-0" (ON 22X34) 1/4" = 1'-0" (ON 11X17)



GENERAL PLAN NOTES

1. NEW WALLS ARE 2X4 WOOD STUDS WITH 5/8" TYPE 'X' GWB BOTH SIDES, PAINTED, WITH LEVEL 3 FINISH, OR TO MATCH ADJACENT WALL TEXTURE AT INFILL WALL LOCATIONS.
2. NEW DOORS AND FRAMES TO BE TIMELY WITH HALF LITE TO MATCH DOORS AND HARDWARE IN THE EXISTING OFFICE, UNLESS NOTED OTHERWISE.
3. NEW 1X4 WOOD BASE TRIM AT ALL WALLS OF NEW LOBBY AND AT NEW WALLS. TRIM AND STAIN TO MATCH EXISTING WINDOW SILLS.

WALL LEGEND

- EXISTING WALL
- NEW WALL

Port of Hood River
 Tenant Improvement
 1000 E. PORT MARINA DR.
 HOOD RIVER, OREGON

Liz Olberding
 ARCHITECT

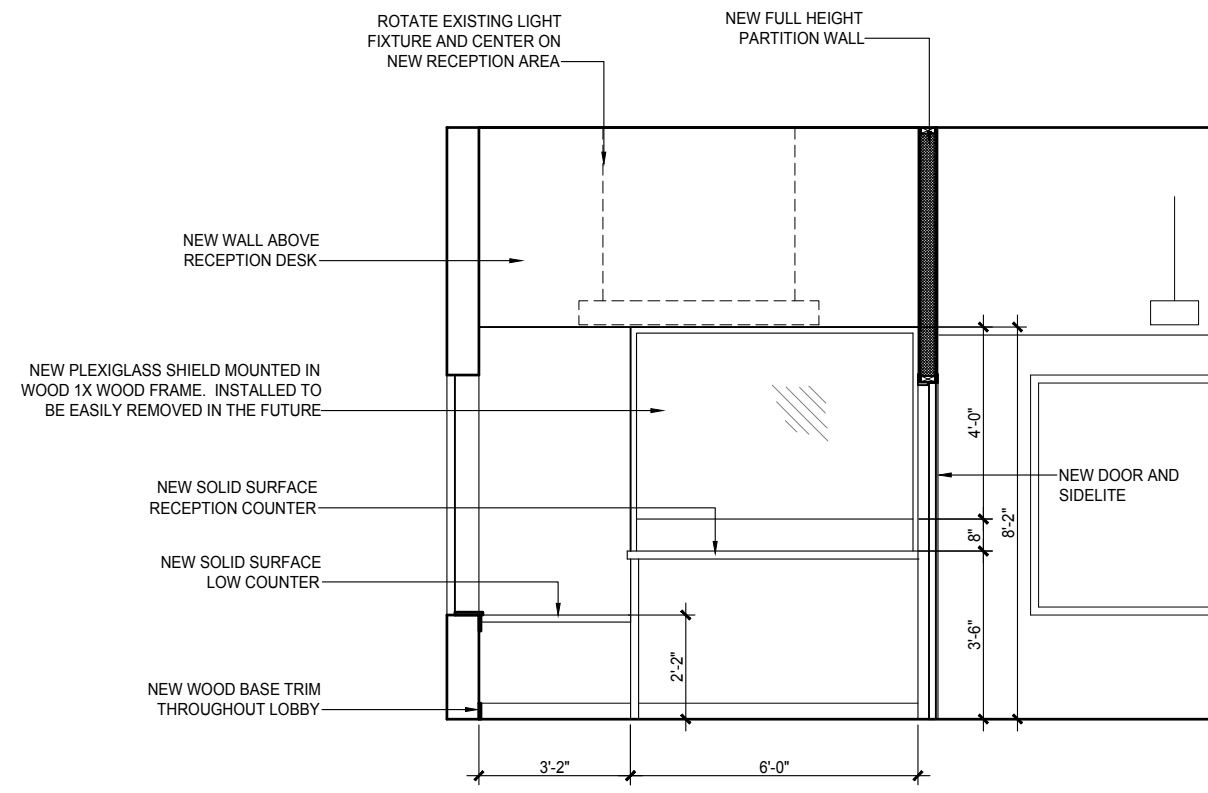
907 .230.9871
 liz@owarch.com

DATE: MAY 26, 2021

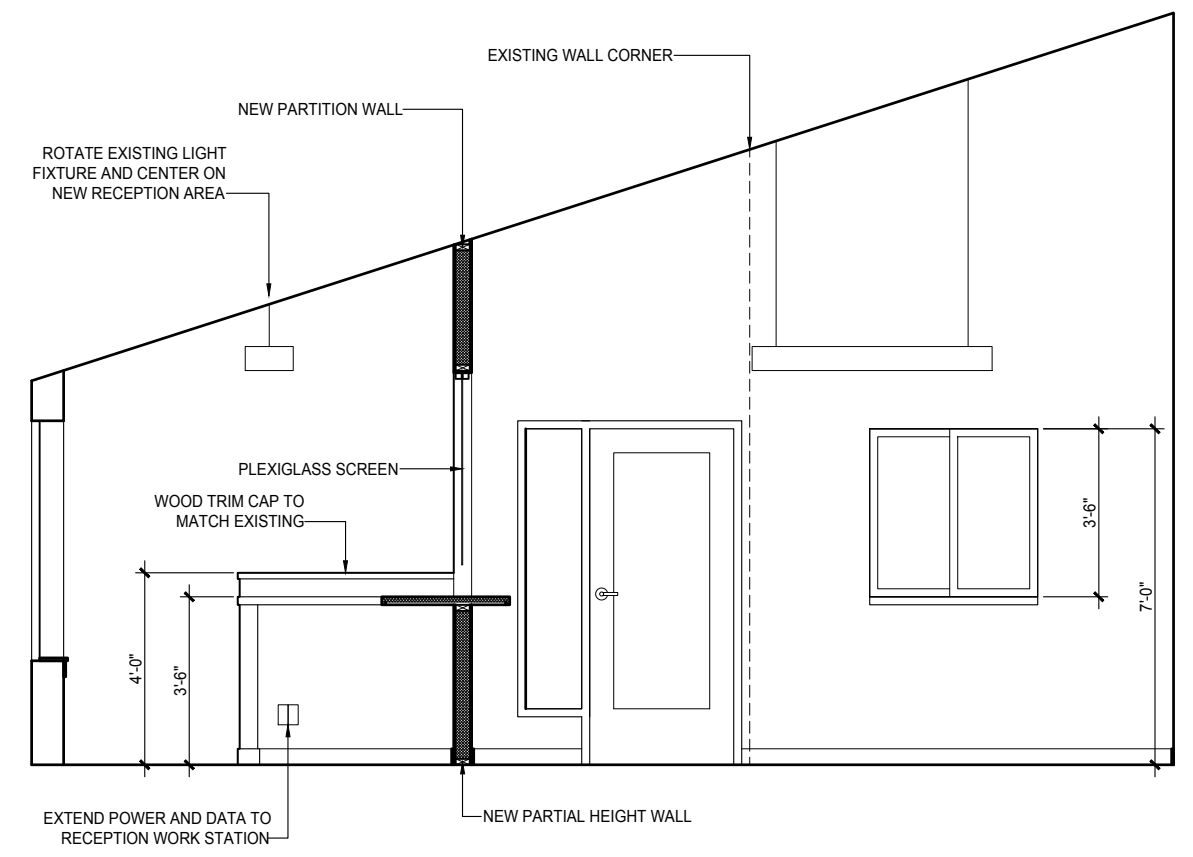
SUBMITTAL: FRONT OFFICE

DRAWING TITLE: FLOOR PLANS

DRAWING NUMBER: A1



1 WEST INTERIOR ELEVATION
 SCALE: 1/2" = 1'-0" (ON 22X34) 1/4" = 1'-0" (ON 11X17)



2 NORTH INTERIOR ELEVATION
 SCALE: 1/2" = 1'-0" (ON 22X34) 1/4" = 1'-0" (ON 11X17)

Port of Hood River
Tenant Improvement
 1000 E. PORT MARINA DR.
 HOOD RIVER, OREGON

Liz Olberding
 ARCHITECT

907 .230.9871
 liz@owarch.com

DATE: MAY 26, 2021

SUBMITTAL: FRONT OFFICE

DRAWING TITLE: INTERIOR ELEVATIONS

DRAWING NUMBER:

A2