



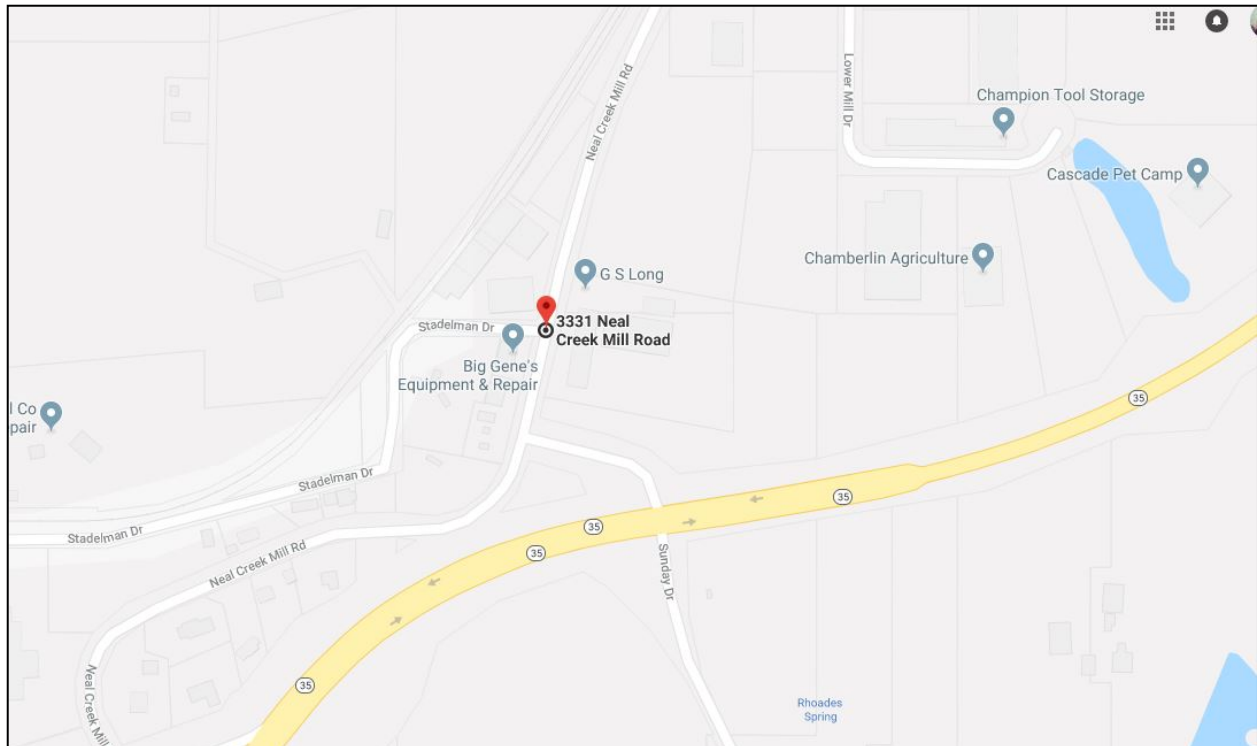
**INDUSTRIAL/COMMERCIAL FACILITIES • AIRPORT • INTERSTATE BRIDGE • MARINA**

1000 E. Port Marina Drive • Hood River, OR 97031 • (541) 386-1645 • Fax: (541) 386-1395 •  
[www.portofhoodriver.com](http://www.portofhoodriver.com) • Email: [porthr@gorge.net](mailto:porthr@gorge.net)

### **Stadleman Waterline Clarification #1**

Issued: April 19, 2018

There was an error in the date of the Mandatory Walk Through in the original ITB. The mandatory walk through is to be held **FRIDAY, April 20 at 11:00**. Meet at the intersection of Neal Creek Road and Stadleman Drive (see map).



# Port of Hood River

Providing for the region's economic future.

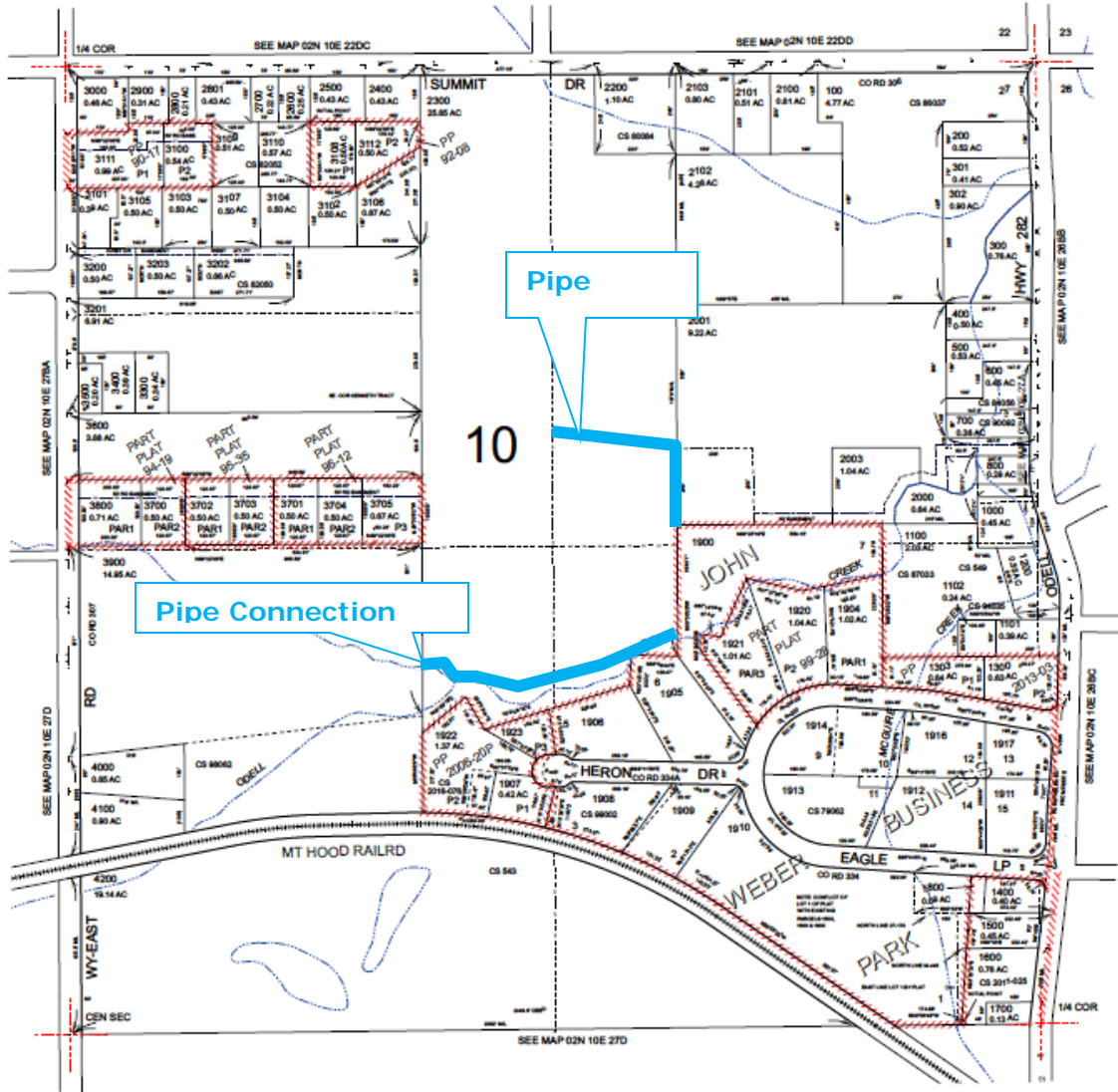
THIS MAP WAS PREPARED FOR ASSESSMENT PURPOSE ONLY



N.E. 1/4 SEC. 27 T. 2N. R. 10E. W.M.  
HOOD RIVER COUNTY  
1" = 200'

02N10E27A

Cancelled  
901  
903  
901  
1301  
1302  
1901  
1902  
1903  
1915  
1918  
1919  
1999  
2002



Revised: MA  
12/21/2016