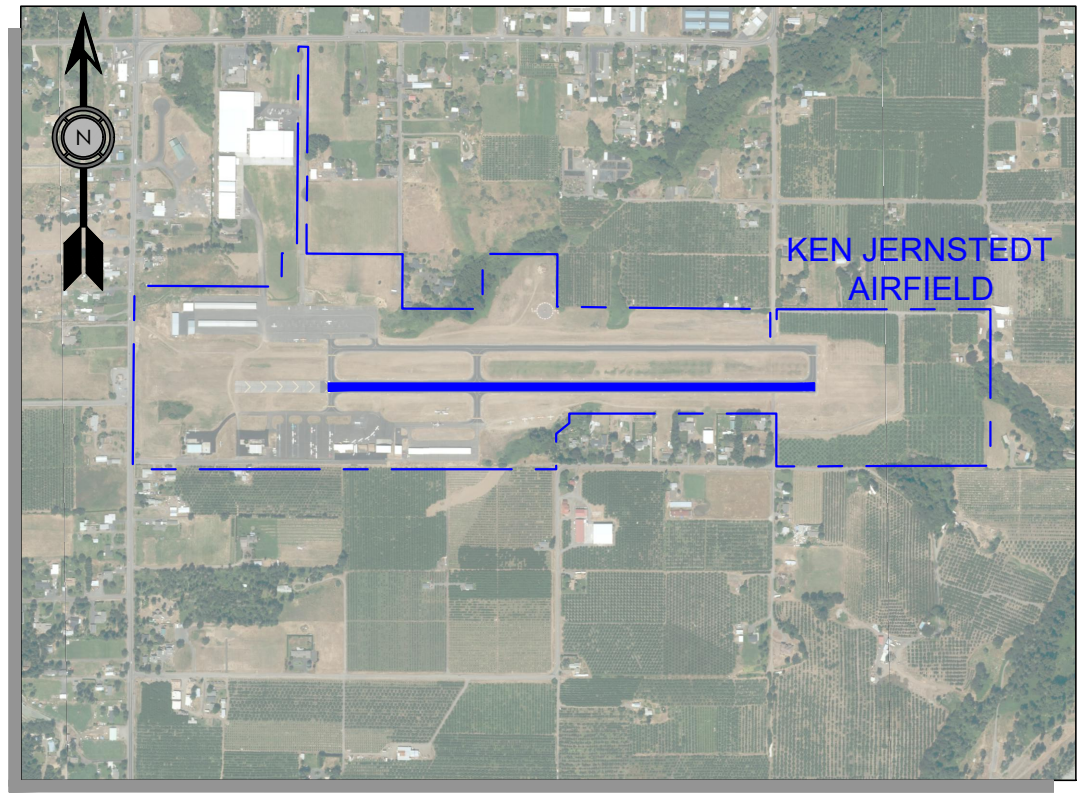
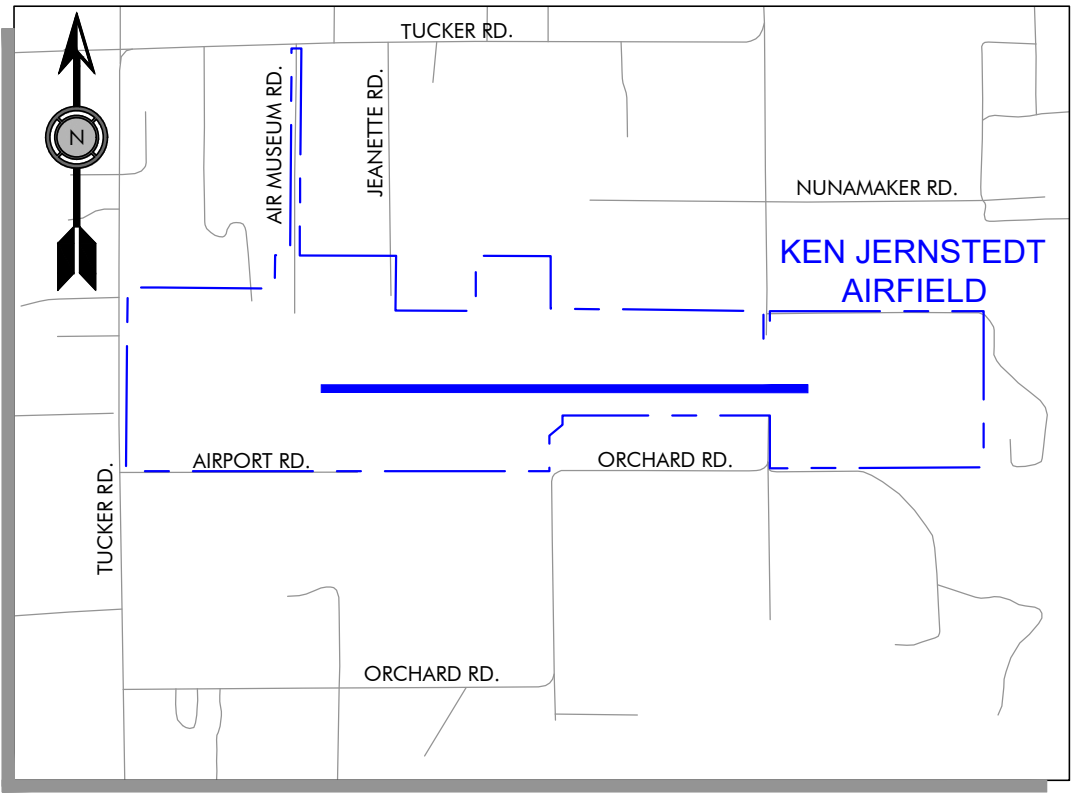


KEN JERNSTEDT AIRFIELD AIRPORT MASTER PLAN

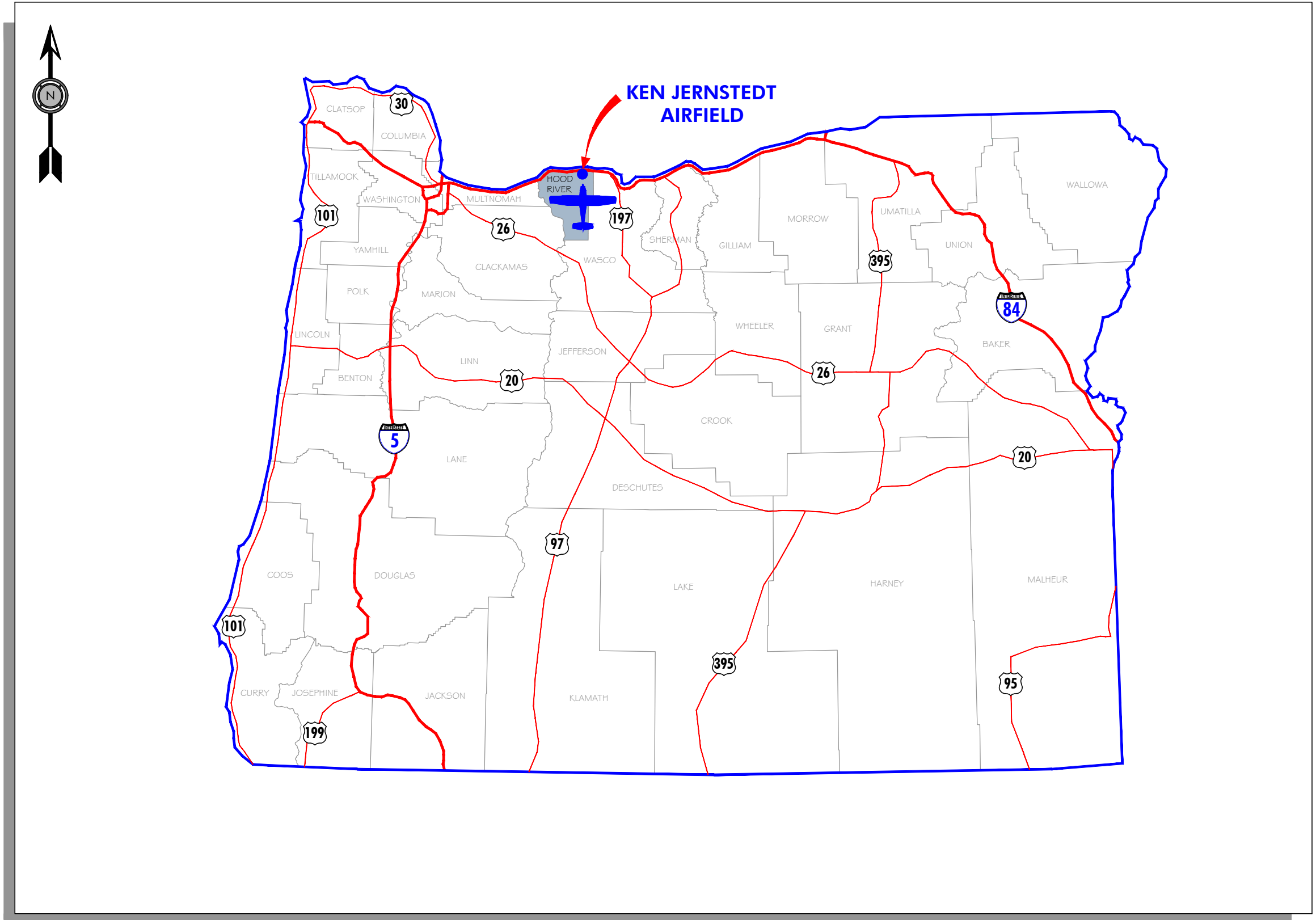
HOOD RIVER, OREGON
 CWEC PROJECT NO. 1239900901
 AIP NO. 3-41-0001-012-01
 MARCH 2018



AERIAL PHOTO



VICINITY MAP



LOCATION MAP

SHEET INDEX

NUMBER	CONTENTS
1	COVER SHEET
2	AIRPORT DATA SHEET
3	AIRPORT LAYOUT PLAN
4	ON - AIRPORT INDIVIDUAL AREA PLANS
5	AIRPORT AIRSPACE PLAN (FAR PART 77)
6	RUNWAY INNER APPROACH SURFACE / RPZ
7	RUNWAY 7 APPROACH PLAN AND PROFILE
8	RUNWAY 25 APPROACH PLAN AND PROFILE
9	ON - AIRPORT LAND USE PLAN
10	OFF - AIRPORT LAND USE PLAN
11	EXHIBIT "A" AIRPORT PROPERTY PLAN

NO.	DATE	BY	APPR	REVISIONS	<p>VERIFY SCALES BAR IS ONE INCH ON ORIGINAL DRAWING. 0" = 1" IF NOT ONE INCH ON THIS SHEET, ADJUST SCALES ACCORDINGLY.</p>	<p>FEDERAL AVIATION ADMINISTRATION APPROVAL</p> <p>APPROVAL DATE: _____</p> <p>_____ SIGNATURE</p>	<p>PORT OF HOOD RIVER APPROVAL</p> <p>APPROVAL DATE: _____</p> <p>_____ SIGNATURE</p>	<p>CENTURY WEST ENGINEERING</p> <p>BEND OFFICE 1020 SW EMKAY DRIVE., #100 BEND, OR 97702 541.322.8962 OFFICE 541.382.2423 FAX</p>	<p>KEN JERNSTEDT AIRFIELD</p>	<p>FIGURE NO. -</p>	
										<p>COVER SHEET</p>	<p>SHEET NO. 1 OF 11</p>
<p>DESIGNED BY: DM DRAWN BY: JLS CHECKED BY: WMR SCALE: AS SHOWN</p> <p>DATE: MARCH 2018 PROJECT NO: 12399009.01</p>											