



EIS Working Group

September 12, 2019

1

Agenda

- Welcome
- Project updates
- Supplemental Draft EIS Status and Alternatives
- Discussion: Bridge Aesthetic Concepts
- Public Comment
- Next Steps
- Adjourn



2

Project Updates

Kevin Greenwood, Port of Hood River
Mark Hirota, WSP



3

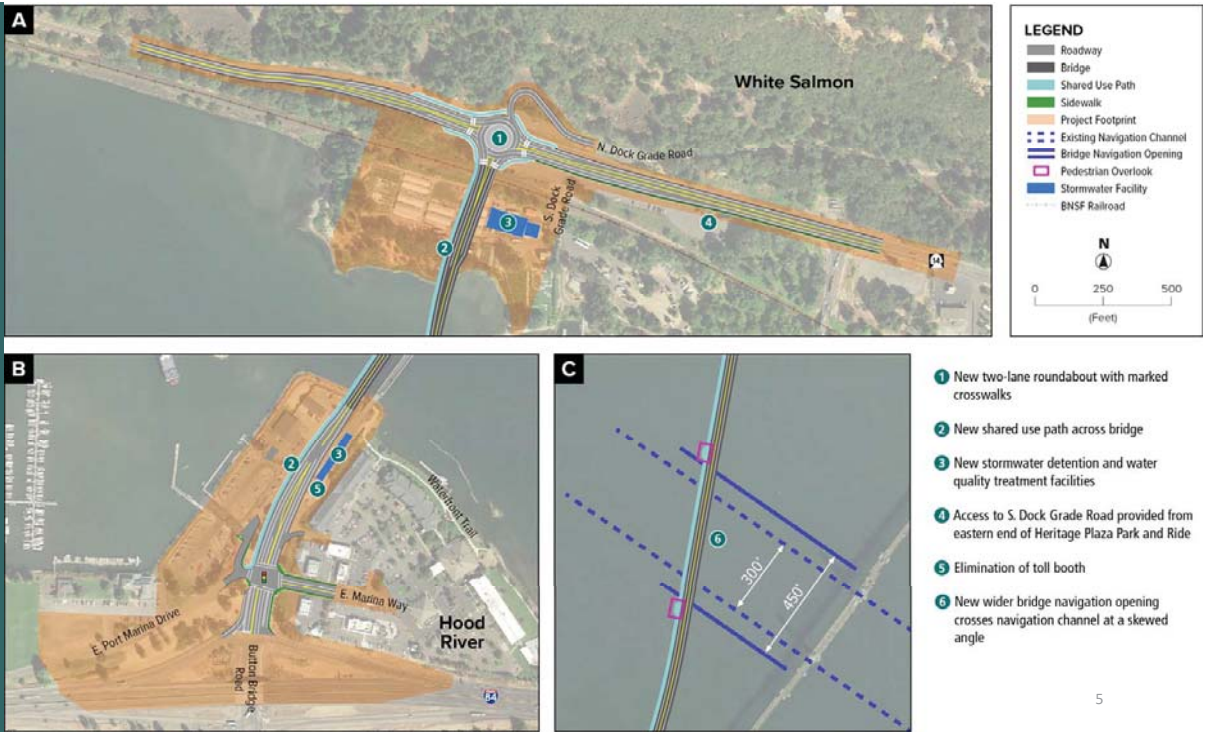
Project Updates

- Updated pedestrian and bicycle connections for each build alternative based on feedback at the last Working Group meeting



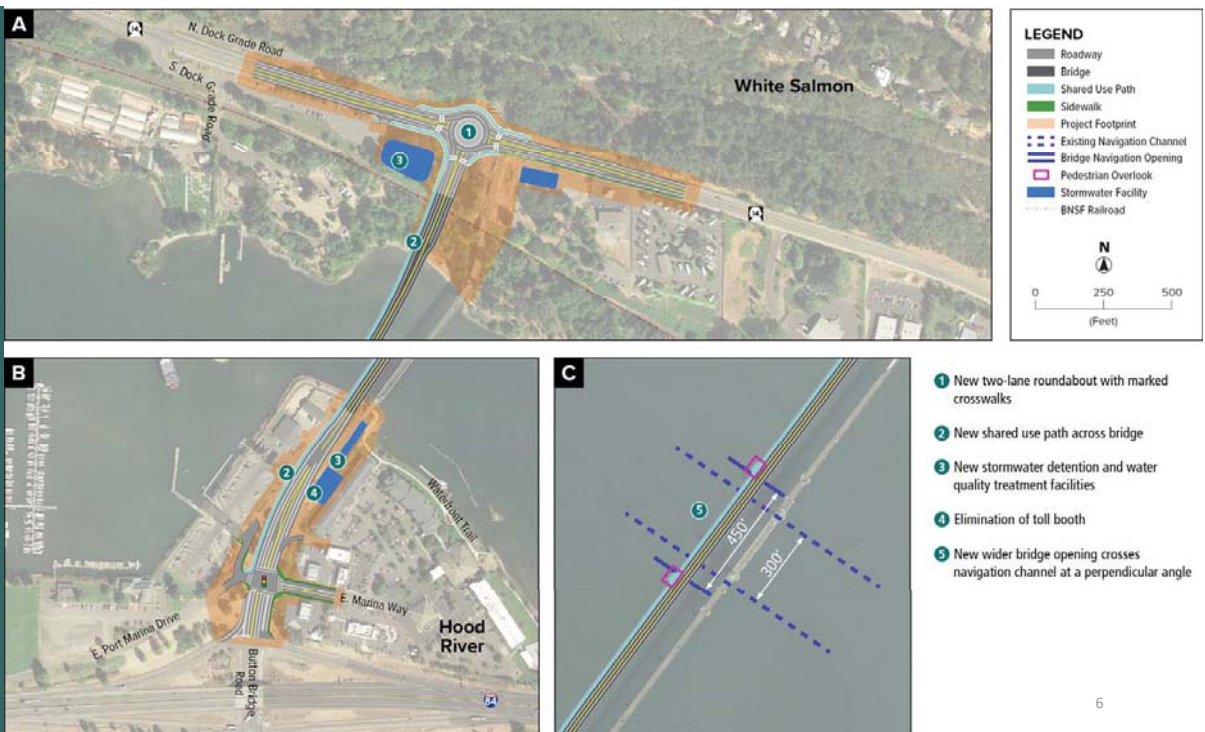
4

Alternative EC-1



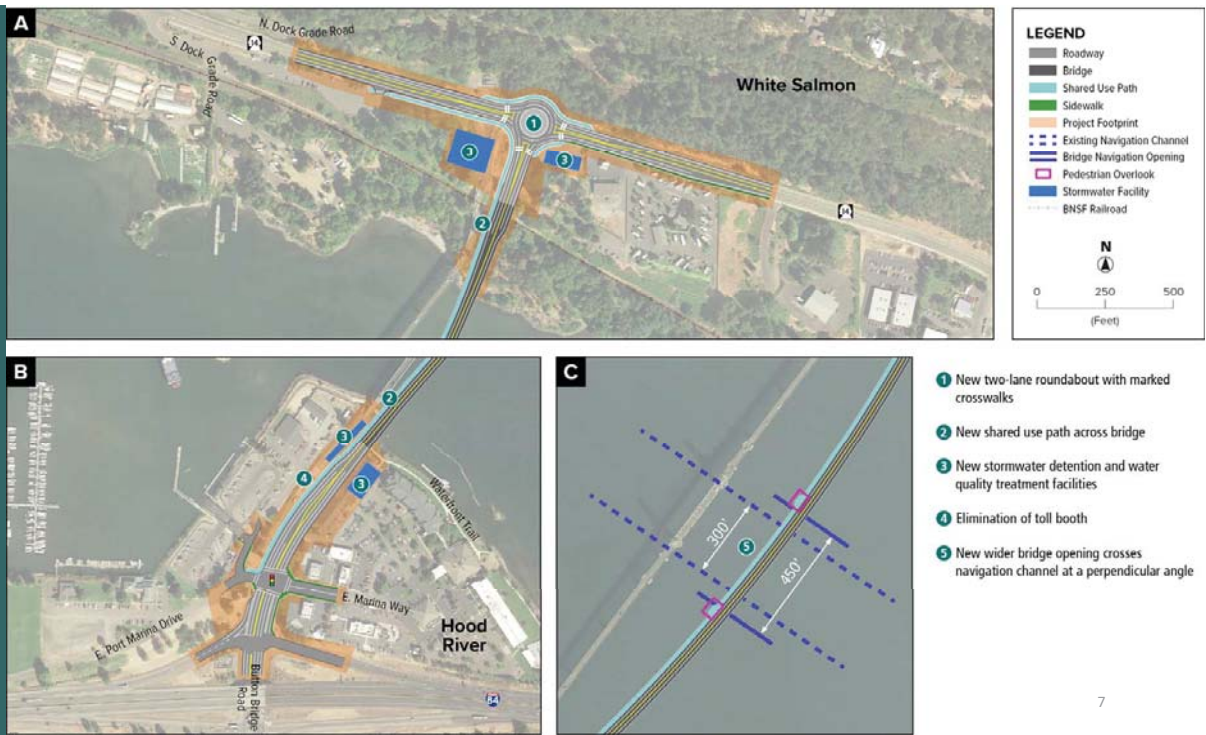
5

Alternative EC-2



6

Alternative EC-3



7

Project Updates

- Community outreach and discussion groups with low income residents
 - **September 7:** Tabling event at Hood River Farmers Market and at Huckleberry Festival in Bingen
 - Share displays of alternatives' design, pedestrian and bicycle facilities, and project visualizations
 - **September 11:** Focus Group at Food Bank in Bingen
 - Recruit 12-15 lower-income and/or Spanish-speaking community members
 - Understand current bridge use and any impact current tolls have on household incomes



8

Supplemental Draft EIS Status & Alternatives

Scott Polzin, WSP



9

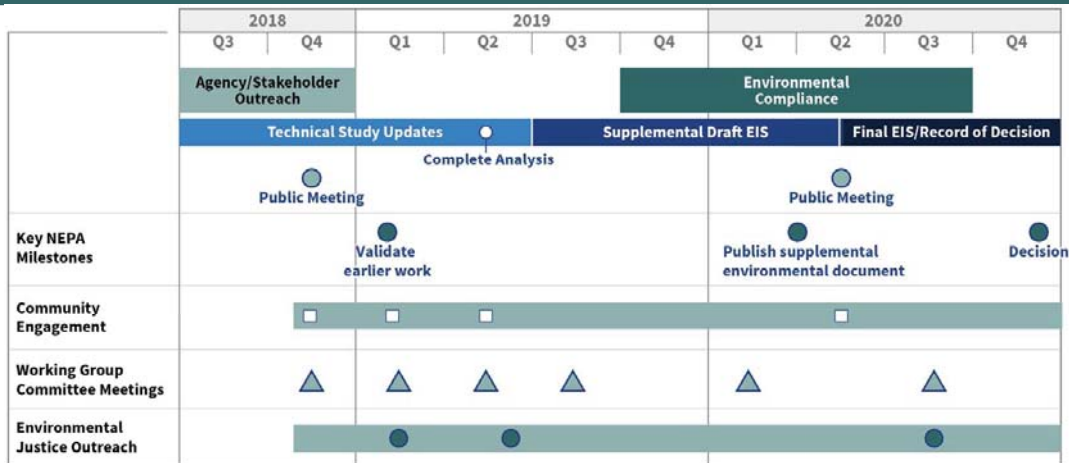
Supplemental Draft EIS Status

- Most of the environmental reports are complete or undergoing final reviews by ODOT, WSDOT and FHWA
- Cultural resources fieldwork is scheduled to occur in October; report will be prepared afterwards
- The first internal draft of the Supplemental Draft EIS was submitted to ODOT and the Port on September 4
 - Draft #2 for FHWA Oregon Division – November
 - Draft #3 for FHWA Legal Sufficiency and Cooperating Agencies – January
 - Draft #4 for final reviews – March
 - Released for public review – April



10

Project Schedule



11

2003 Build Alternatives: EC-1, EC-2 and EC-3



- In 2003, the three build alternatives were evaluated across multiple criteria to identify a preliminary preferred alternative
- Alternatives EC-2 and EC-3 were scored similarly; however, EC-2 had slightly fewer impacts. Thus, EC-2 was identified as the Preliminary Preferred Alternative in the Draft EIS
- Alternative EC-1 scored lower than either EC-2 or EC-3, but was still a reasonable option

12

2019 Build Alternatives: EC-1, EC-2 and EC-3

- In 2019, roadway connections to SR 14 and Button Bridge Road were designed
- Concerns were raised about the constructability of Alternative EC-1
- A re-screening of all build alternatives was conducted



2019 Re-Screening of Build Alternatives

	Alt EC-1	Alt EC-2	Alt EC-3	No Action
Improvement to cross-river transportation	L/M	L	L	M/H
Impact to the environment	M	L/M	L/M	L
Impact to recreation	L	L	L	L/M
Impact to cultural and historic resources	M/H	M/H	M	n/a
Financial acceptance; Support for local economic development	M	L/M	M	H
Construction impacts	H	L/M	L/M	n/a
Project Team Recommendation	Dismiss	Advance as Preliminary Preferred	Advance	Advance (Required)



L = Low
L/M = Low/Medium
M = Medium
M/H = Medium/High
H = High

Discussion: Bridge Visualizations

Mark Hirota, WSP



15

Bridge Visualizations

- Review a sample of themes for architectural sketches that can be considered for the replacement bridge deck
- Photo simulations
- Other visualizations from the 3-D model
- Member discussion and input



16

Architectural Sketches

- 3 themes considered for architectural components on the bridge deck as seen by shared use path users
 - **Historic:** reflect elements of the existing bridge
 - **I-84 Design:** design elements to have a look similar to other bridges and roadways along I-84 and other National Scenic Area facilities
 - **Contemporary:** create a unique, modern look that fits with the landscape and communities of White Salmon, Bingen and Hood River



Historic Concept

RAILING



VEHICLE LANE LIGHTING



Valmont 'Deco'

WALKWAY LIGHTING



Upight + roll light

BENCHES



ParkVue - backless / Landscape Forms



I-84 Concept

RAILING



VEHICLE LANE LIGHTING



Valmont - standard

WALKWAY LIGHTING

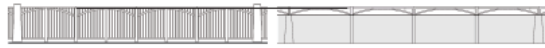


Recessed post light

BENCHES



Carrival II Bench / Thomas Steele



HOOD RIVER BRIDGE - I-84 CONCEPT

09. 06. 2019

Contemporary Concept

RAILING

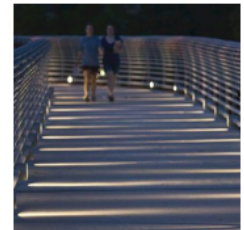


VEHICLE LANE LIGHTING



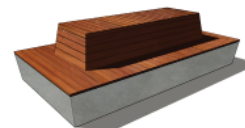
Valmont - curved

WALKWAY LIGHTING



Vertical ground light

BENCHES



Custom two-level bench



HOOD RIVER BRIDGE - CONTEMPORARY

09. 06. 2019

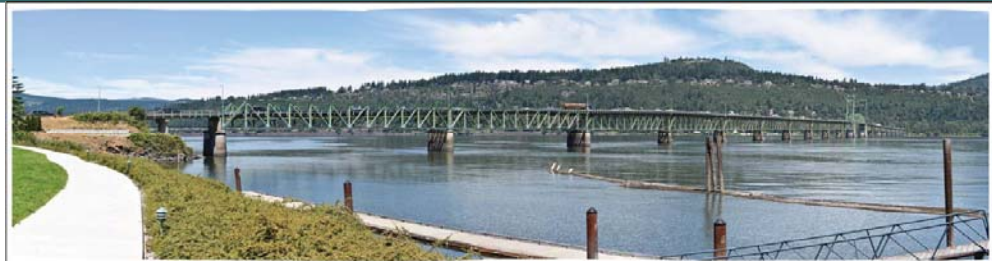
Photo Simulations

- 5 Photo Simulations
 - Base photo taken from a point along Key Viewing Areas, which are defined in the CRGNSA Management Plan
 - Existing View is compared to a Simulated View



21

View to northwest from Hood River Waterfront Trail



View to southeast from Waubish Road in White Salmon



View at SR 14 Intersection in White Salmon



View to northwest from Mark O. Hatfield Trailhead in Hood River



View to northeast from Marina Beach Sandbar at Port of Hood River



Other Visualizations

- 2 visualizations from the 3-D Model
 - 3-D model created for the simulations and overlaid on base photos
- Additional visualizations prepared without a base photo – surrounding landscape is computer generated and does not accurately represent geological and urbanized areas



27

View at SR 14 Intersection in White Salmon



View of Bridge Deck with Separated Shared Use Path



Public Comment

Anne Presentin



Public Comment

- Observers are welcome to provide comment to the Working Group.
- Comment time limits will be determined by number of people desiring to make comment.



31

Next Steps

Anne Presentin



32

Next Steps

- Meeting schedule/topics
- Action items
- Meeting evaluation



33



BRIDGE REPLACEMENT PROJECT

Adjourn

34