



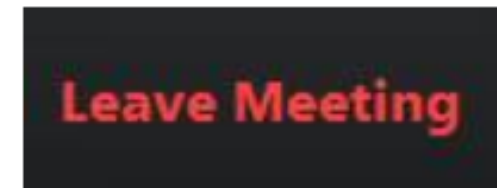
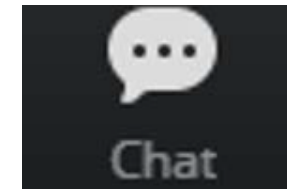
Hood River – White Salmon
BRIDGE REPLACEMENT PROJECT

EIS Working Group

September 17, 2020

Zoom Tips

- You will be muted when you sign in to reduce background noise. But we absolutely want to hear from you! Here's how you participate:
 - Ask questions by **raising a virtual hand** – the moderator will call on you at the end of a slide or during a question and answer break. The host can unmute you, or you can do so by clicking the **unmute** button.
 - Or, **use the chat box** to write questions that you want to make sure we address – if we know we're going to address this later in the meeting, we'll let you know.
- If the video freezes or you get dropped off the Zoom platform unexpectedly, please sign in again the same way. You can close your window or use the **Leave Meeting** button in the bottom right corner to sign out.
- Please note that the **meeting is being recorded**.



Agenda

- Welcome
- Project updates
- Supplemental Draft EIS: Preview
- Discussion: Public Involvement Plans
- Public Comment
- Next Steps
- Adjourn



Welcome

- Purpose of the EIS Working Group
- Introductions – new members
- Acknowledge meeting summary from September 2019

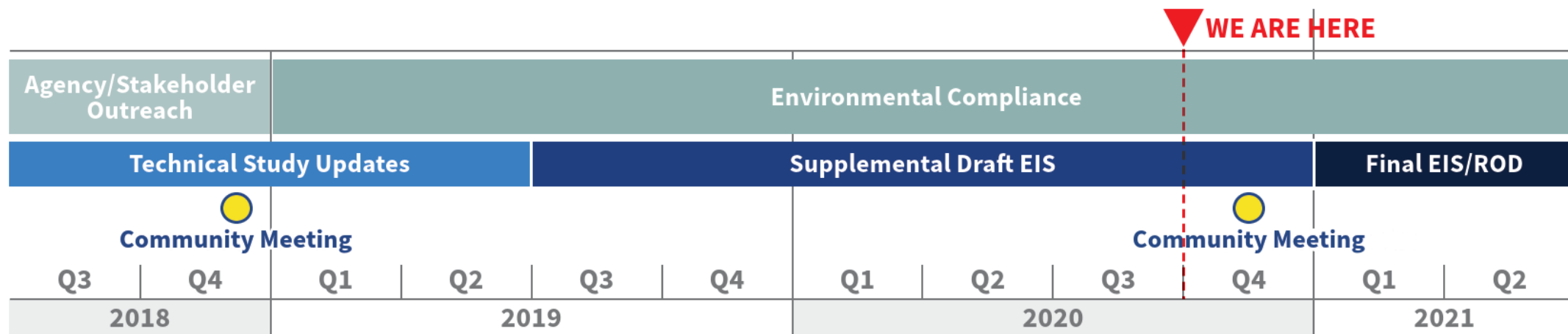
Project Updates

Kevin Greenwood, Port of Hood River



Review of Past Work

- Early community outreach to re-launch the project
- Re-evaluated the 2003 Draft EIS technical analyses
- Confirmed purpose and need, preferred alternative
- Updated and conducted new environmental and traffic impact analysis
- Extensive agency outreach, tribal consultation
- Advanced the bridge approach road design
- Obtained a Preliminary Navigation Determination from the US Coast Guard
- Prepare photo-simulations
- Developed conceptual aesthetic treatment
- Prepared a Supplement Draft EIS – in final review



Previous Public Engagement Activities



- Stakeholder interviews
- Open house and survey
- Information tables
- Focused outreach to Hispanic and Latin American communities
- Focused outreach to people experiencing low incomes

- EIS WG advice that was incorporated into the project
 - Sense of urgency
 - Bike/ped pathway
 - Preferred alternative
 - Bridge aesthetics
 - Bridge type
 - Outreach tactics

Project Updates

Work accomplished since September 2019

- Prepared 4 administrative drafts of the Supplemental Draft EIS
 - ODOT NEPA and technical reviews – **Sept 2019 and Nov 2019**
 - FHWA Oregon Division Office review – **July 2020**
 - FHWA legal sufficiency and Cooperating Agency reviews – **Sept 2020**
- Conducted historic property and archaeological surveys – **Fall 2019-Spring 2020**
- Prepared multiple conceptual construction scenarios – **Winter-Summer 2020**
- Prepared biological assessment; submitted to FHWA, NMFS, USFWS – **Sept 2020**
- Prepared Section 4(f) analysis – **Summer 2020**

Tribal Consultation and Outreach to U.S. Bureau of Indian Affairs & Columbia River Inter-Tribal Fishing Commission

- Met with U.S. BIA – **November 2019**
- Met with CRITFC – **January 2020**
- Presentations to the Umatilla Cultural Resources Committee and Fish and Wildlife Commission – **Jan-Feb 2020**
- Contracted with Nez Perce, Warm Springs and Yakama to prepare ethnographic studies – **January 2020 to present**
- Prepared photo-simulations of the views from the White Salmon Treaty Fishing Access Site – **July 2020**
- On-going discussions with all 7 consulting tribes; COVID-19 challenges

White Salmon Treaty Fishing Access Site Lower Dock *(view to east)*



White Salmon Treaty Fishing Access Site Upper Dock (view to southeast)



Bi-State Bridge Replacement Working Group Activities

Bi-State Working Group (BSWG) was established by six local agencies with the purpose of developing a regional governance structure for advocacy for and construction of the replacement bridge. Agencies include:

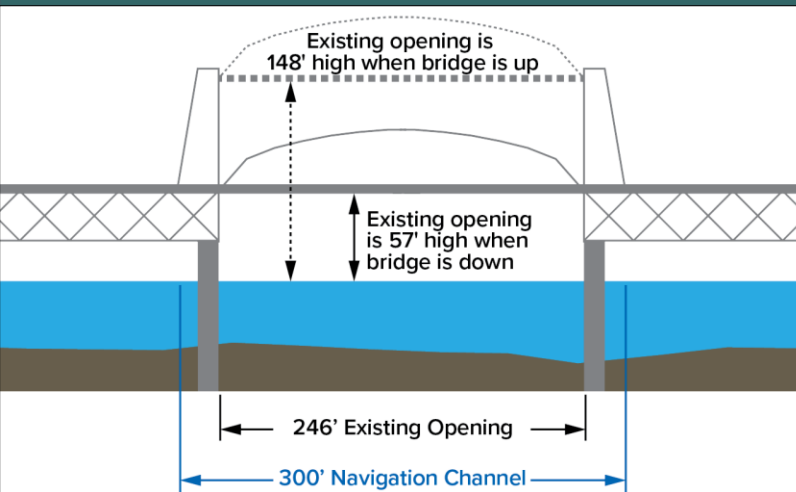
- Cities of Hood River, White Salmon and Bingen
- Counties of Klickitat and Hood River
- Port of Hood River
- Establishing a vision for the long-term Bi-State Bridge Authority
- Developing a joint MOU formalizing the interim BSWG
- Creating a work plan prioritizing required tasks necessary for constructing a new bridge
- Advocating for necessary policy requirements and funding for the new bridge

Supplemental Draft EIS: Preview

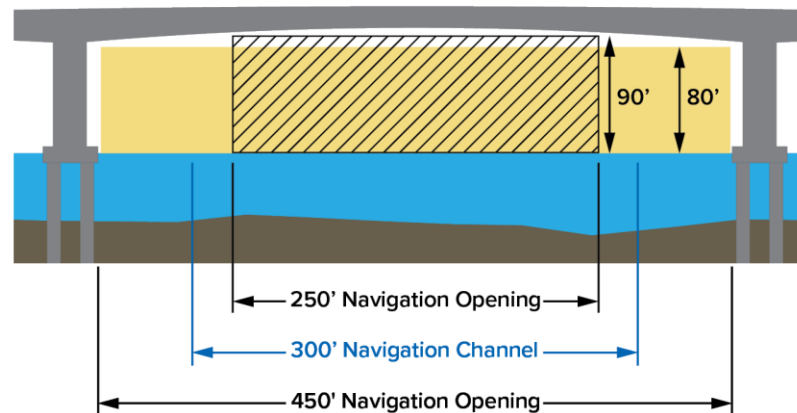
Angela Findley, WSP



Preferred Alternative EC-2 and Alternative EC-3



Existing Bridge



Replacement Bridge

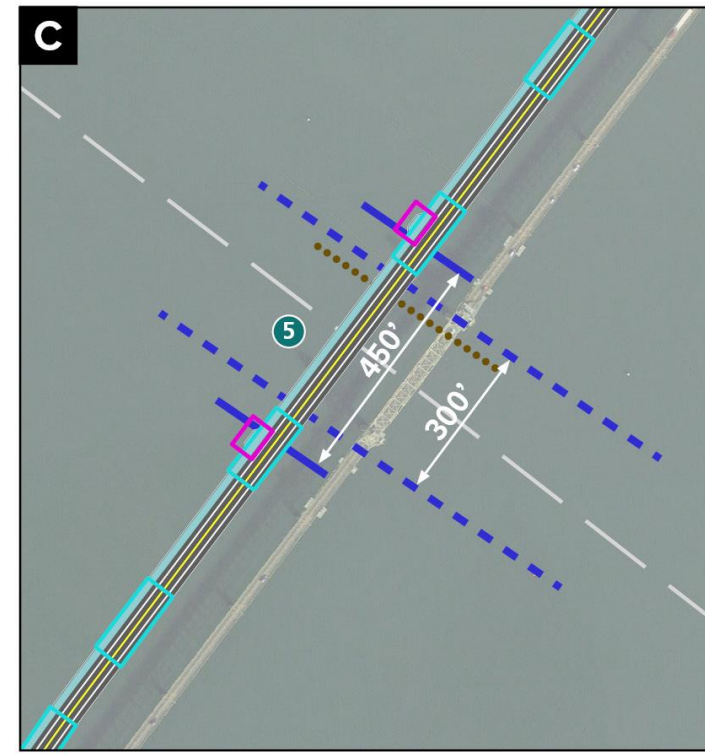
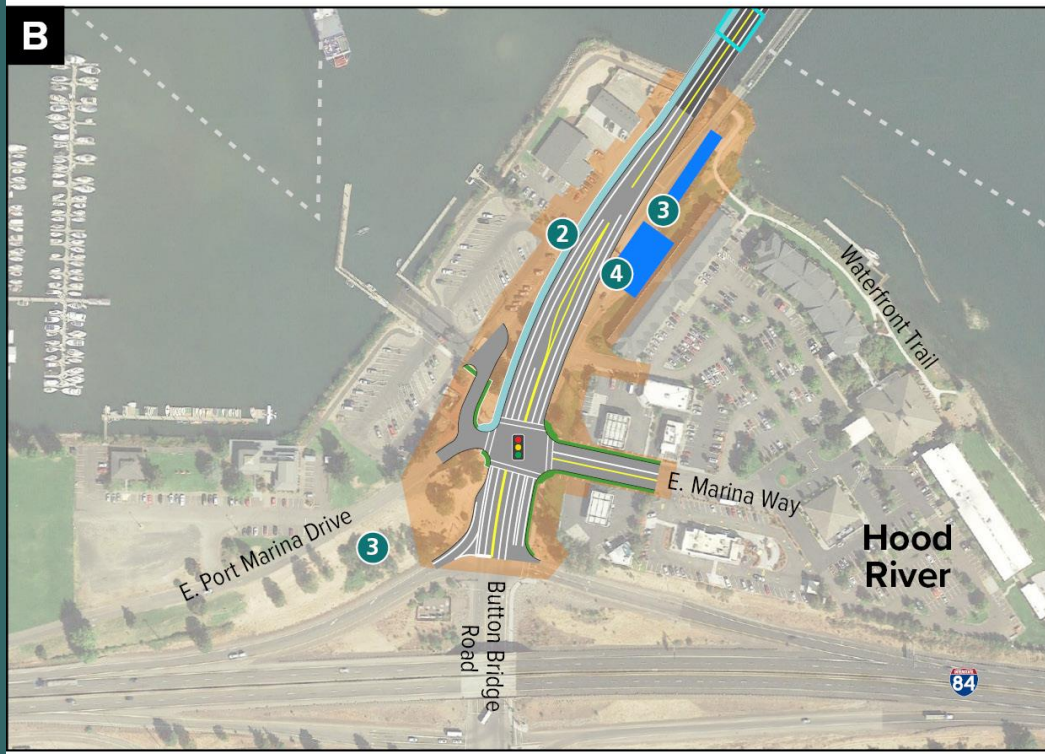
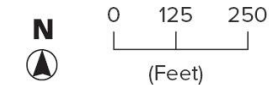


Preferred Alternative EC-2



LEGEND

- Roadway
- Bridge
- Shared Use Path
- Sidewalk
- Project Footprint
- Existing Navigation Channel
- Bridge Navigation Opening
- Thalweg
- Pedestrian Overlook
- Stormwater Facility
- Pier Location
- BNSF Railroad
- State Boundary
- City Boundary



- 1 New two-lane roundabout with marked crosswalks
- 2 New shared use path across bridge
- 3 New stormwater detention and water quality treatment facilities
- 4 Elimination of toll booth
- 5 New wider bridge opening crosses navigation channel at a perpendicular angle

Alternative EC-3

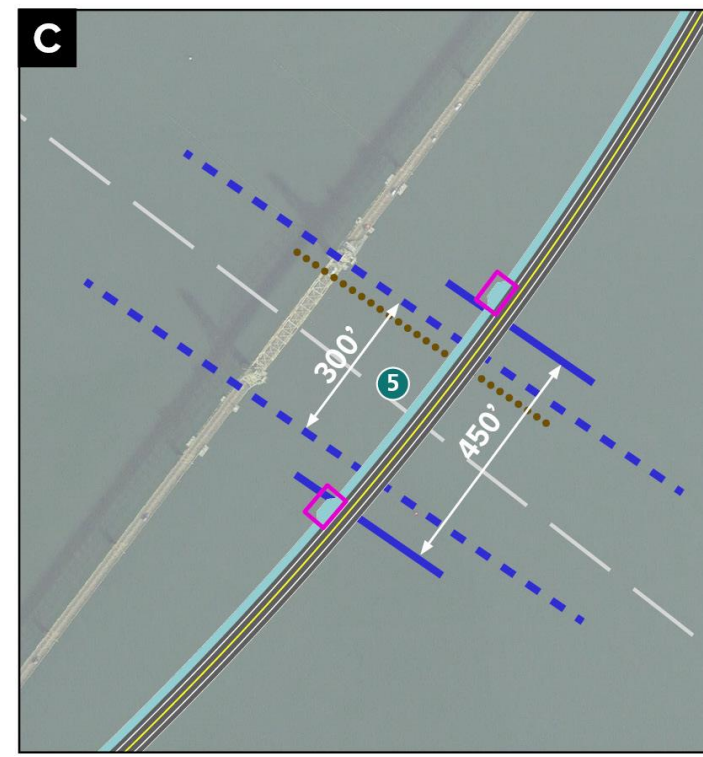
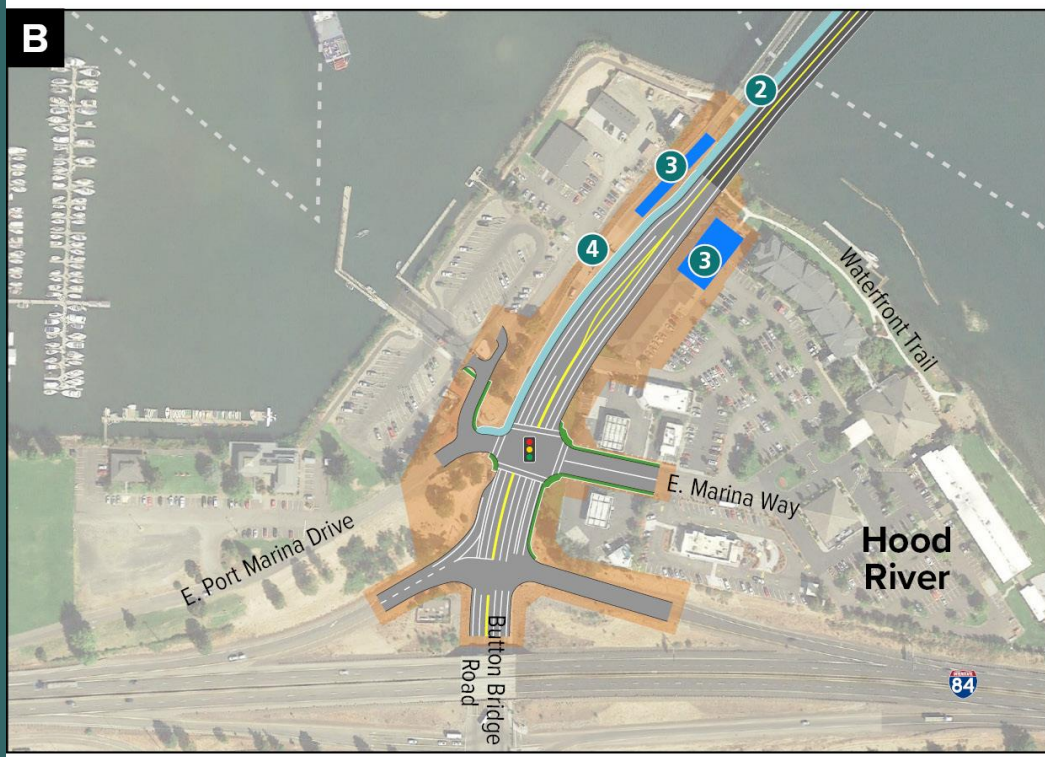


LEGEND

- Roadway
- Bridge
- Shared Use Path
- Sidewalk
- Project Footprint
- Existing Navigation Channel
- Bridge Navigation Opening
- Thalweg
- Pedestrian Overlook
- Stormwater Facility
- BNSF Railroad
- State Boundary
- City Boundary



0 125 250
(Feet)



- 1 New two-lane roundabout with marked crosswalks
- 2 New shared use path across bridge
- 3 New stormwater detention and water quality treatment facilities
- 4 Elimination of toll booth
- 5 New wider bridge opening crosses navigation channel at a perpendicular angle

Supplemental Draft EIS – Impact Analysis

Land Use

- **Alt EC-2:** 2.8 ac property acquisition; 3 full parcels; 12 partial parcels; impacts to Port property and operations
- **Alt EC-3:** 3.4 ac property acquisition; 2 full parcels; 11 partial parcels; 8 commercial businesses and 5 hotel suites

Community and Social Resources

- Overall benefits
- New shared use path for pedestrians and bicycles on bridge with 2 overlooks
- Improved travel times for all vehicles, including emergency response, transit
- Alt EC-3: displaces 2 non-profits that provide community services

Supplemental Draft EIS – Impact Analysis

Environmental Justice

(minority and low-income populations)

- Air and dust emissions, noise and underwater noise impacts, vibration, turbidity, in-water obstacles and detours for tribal fishers
- Financial burden to low-income households from any potential toll increases
- Disproportionately high and adverse impacts to minority and low-income populations

Local and Regional Economies

- Overall benefits
- Improved regional river connection for freight, workers and residents
- Reliable cross-river route to access jobs, services, shopping, recreation
- 70-80 full-time construction jobs for 6 years

Supplemental Draft EIS – Impact Analysis

Parks and Recreation

- Temporary closures/detours at Marina Park and Boat Basin, Waterfront Trail, Bridge Park (if developed)
- Wider bridge crossing over Waterfront Trail and Bridge Park
- Loss of 18 parking spaces at Port (3 at boat launch, 15 at office)

Supplemental Draft EIS – Impact Analysis



Historic Resources

- Removal of Hood River Bridge – adverse effect
- Hood River Loops (HCRH), SP&S (BNSF) Railway, OR&N (UPRR) Railroad, 5 historic houses – no adverse effect
- 1 historic house – no effect

LEGEND

□ APE

Historic Resources

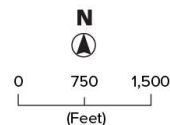
○ Hood River-White Salmon Interstate Bridge

● Columbia River Highway NHL District, Hood River Loops

● Potentially Eligible Historic Residence in Hood River, OR

● Potentially Eligible Historic Residence in White Salmon, WA

--- Potentially Eligible Historic Railroad



Supplemental Draft EIS – Impact Analysis

Waterways and Water Quality

- Potential for hazardous material spills during construction
- Overall benefit with stormwater management to collect and treat runoff on bridge, approach roads

Vegetation and Wetlands

- **Alt EC-2:** 3.32 ac vegetation removal; 0.26 wetland and buffer impact
- **Alt EC-3:** 4.48 ac vegetation removal; 0.17 wetland and buffer impact

Supplemental Draft EIS – Impact Analysis

Fish and Wildlife

- Construction activities – greatest impact on fish and fish habitat; 6-year duration
- Limited work outside the regulated in-water work windows (Nov 15-Mar 15 with possible early start on Oct 1)
- Pile driving – noise, vibration; up to 6,000 strikes/day during work window
- Cofferdam/drilled shaft casing construction for new bridge foundations and remove of existing bridge piers

Air Quality & Greenhouse Gases

- Pollutant emissions from equipment, dust during construction
- Increase greenhouse gas (CO_{2e}) emissions during construction

Supplemental Draft EIS – Impact Analysis



Visual

- Construction lighting, signs, brightly colored and reflective materials, heavy equipment, terrain grading, and in-water equipment (barges, cranes)
- New bridge more noticeable in close-up views toward to the bridge compared to faraway views
- Higher bridge with less piers creates more open viewing under the bridge
- Added viewing areas from the shared-use path and overlooks

Noise

- Temporary increases in noise during construction
- Noise impacts pre-/post-construction are influenced by I-84

Supplemental Draft EIS – Impact Analysis

Hazardous Materials

- Construction activities could encounter contaminated materials in sediments in the river bed, railroad right of way, structures removed (e.g., tollbooth)
- Potential for spills during construction
- Overall benefit that future spills from vehicles on the bridge would be contained and treated

Other Analysis

- Transportation, safety, emergency response, transit, pedestrian, bikes
- Treaty fishing rights by the four Columbia River treaty tribes
- Geology and soils, archaeological resources, energy, cumulative effects
- Section 4(f) analysis (historic and recreation)
- Section 6(f) resources (Port property)

Project Schedule



Supplemental Draft EIS – Discussion

- What topics will the community be most interested in?
- What questions will stakeholders have about the results of the analysis?
- Does the analysis suggest that a change is needed to the preferred alternative (EC-2)?

Public Involvement

Anne Pressentin, WSP



Public Involvement – Current Constraints

- COVID-19 physical distancing
- Attention spans – given pandemic, air quality
- Digital divide

Public Comment Period: Activities

- **Public notification:**

- Website
- Participating agency notice
- News release
- Social media with boosted post
- News paper advertising (print/digital)
- Requests to local organizations and agencies tell their members
- Flyer/posters at places people go
- Email blasts

- **Webinar**

- Similar presentation as tonight
- Opportunity to ask questions and provide verbal comment

- **Comment Form**

- Printed
- Online

Public Involvement – Discussion

- What audiences will be missed with planned activities?
- What other activities would expand the reach of outreach?
- What should the project team consider when creating and distributing project information for the comment period?

Public Comment

Anne Pressentin



Public Comment



- Observers are welcome to provide comment to the Working Group.
- Comment time limits will be determined by number of people desiring to make comment.

Next Steps

Anne Pressentin



Next Steps

- Next meeting
 - Jan/Feb 2021 to review public comments on Supplemental Draft EIS
- Action items



Hood River – White Salmon

BRIDGE REPLACEMENT PROJECT

Adjourn